

Treatment ID 17419



Location

Review

Boxhill rd, Porongurups

Widen/maintain existing roadway to a minimum of 4m wide, where possible maintain an additional 1m low fuel either side, remove over-hanging vegetation to 5m high. All fallen branches and excess fuel load along roadway (including those prior to works) to be removed or mulched to a fine ground cover.

Treatment Type

Access track

Size of Area/Length of Track

0.35km

Treatment ID 17683



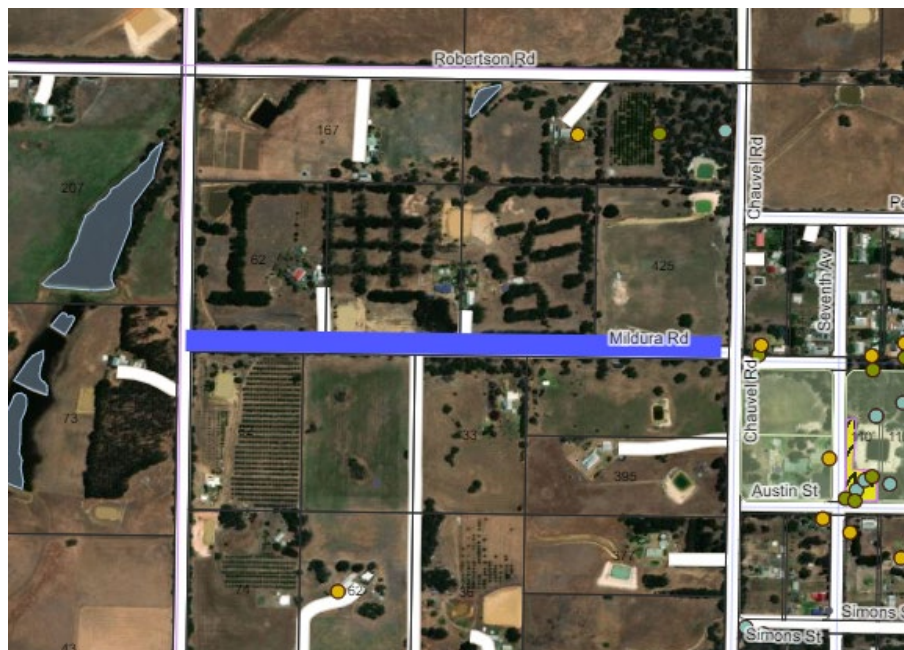
Location	Works Required in area Highlighted in purple
Mondurup Reserve	Widen/maintain existing fire access tracks to a minimum of 4m wide where possible, slash/mulch a 1m low fuel boundary on either side, and remove over-hanging vegetation to 5m high. Add a water erosion treatment - see Shire specifications Grade track using natural scree, All lopping's and materials to be removed from site or mulched to a fine ground cover. Low fuel boundary includes mulching or removal of previously fallen limbs as well as lopped. Note*position of track approximate
Treatment Type	
Access track	
Size of Area/Length of Track	
0.31	

Treatment ID 17716



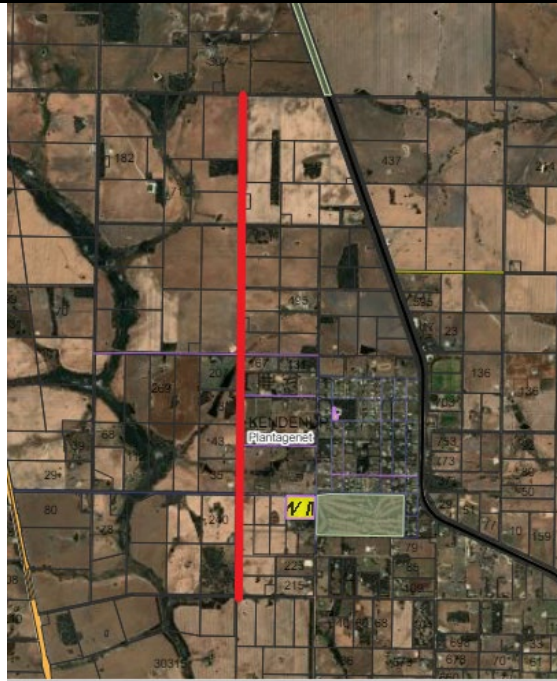
Location	Works Required in area Highlighted in yellow
Beverley rd and Chauvel rd, Kendenup	Slash any open areas to a minimum 50mm in height;
Treatment Type	Widen/maintain existing fire access tracks/fire breaks to a minimum of 4m wide where possible, slash/mulch a 1m low fuel boundary on either side where possible, and remove over-hanging vegetation to 5m high.
Mecanical works	
Size of Area/Length of Track	
6.73ha	

Treatment ID 17717



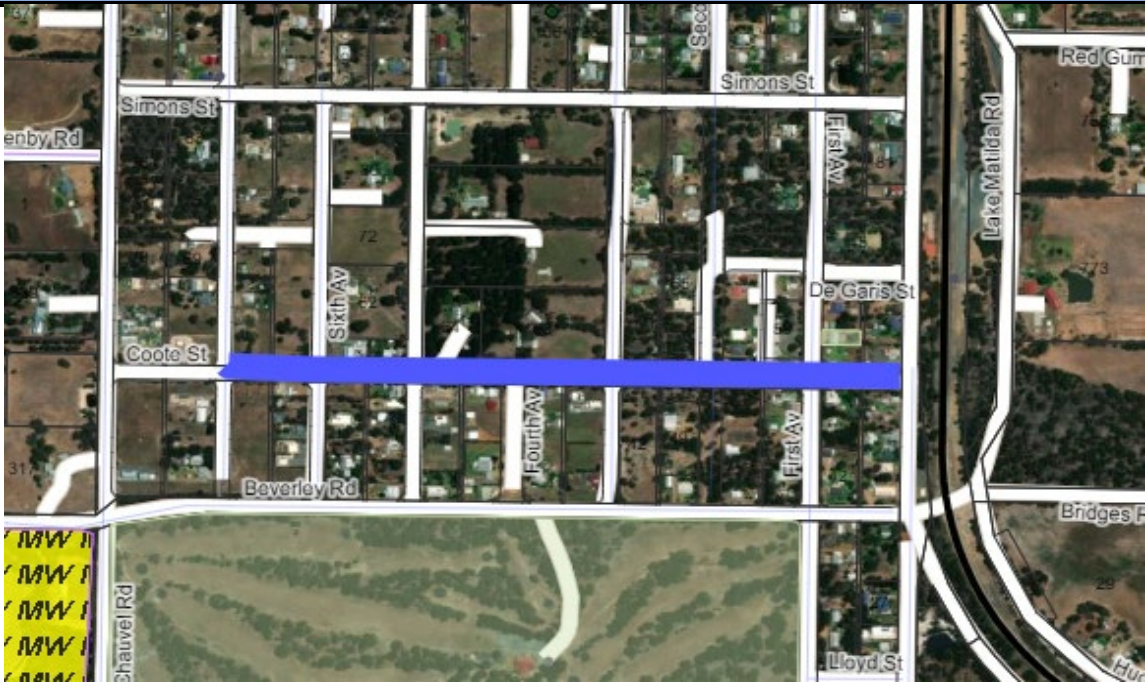
Location	Works Required in area Highlighted in purple
Mildura rd, Kendenup	Create a low fuel boundary on either side of the trail by mulching or removal of previously fallen limbs as well as lopped.
Treatment Type	Maintain existing fire access tracks to a minimum of 4m wide where possible, slash/mulch a 1m low fuel boundary on either side, and remove over-hanging vegetation to 5m high.
	All lopping's and materials to be removed from site or mulched to a fine ground cover.
Size of Area/Length of Track	
1.166km	

Treatment ID 17718



Location	Works Required in area Highlighted in red
Monash rd, Kendenup	Widen/maintain existing fire access tracks to a minimum of 4m wide where possible, slash/mulch a 1m low fuel boundary on either side, and remove over-hanging vegetation to 5m high.
Treatment Type	Slash any open areas along low fuel boundary.
	All lopping's and materials to be removed from site or mulched to a fine ground cover.
Size of Area/Length of Track	Low fuel boundary includes mulching or removal of previously fallen limbs as well as lopped.
5.749km	

Treatment ID 17719



Location	Works Required in area Highlighted in purple
Coote st, Kendenup	<p>Create a low fuel boundary on either side of the trail by mulching or removal of previously fallen limbs as well as lopped.</p>
Treatment Type	<p>Maintain existing fire access tracks to a minimum of 4m wide where possible, slash/mulch a 1m low fuel boundary on either side, and remove over-hanging vegetation to 5m high.</p>
	<p>All lopping's and materials to be removed from site or mulched to a fine ground cover.</p>
Size of Area/Length of Track	
0.889km	

Treatment ID 17720



Location	Works Required in area Highlighted in red
Roberts rd, Kendenup	<p>Create a low fuel boundary on either side of the trail by mulching or removal of previously fallen limbs as well as lopped.</p> <p>Maintain existing fire access tracks to a minimum of 4m wide where possible, slash/mulch a 1m low fuel boundary on either side, and remove over-hanging vegetation to 5m high.</p> <p>All lopping's and materials to be removed from site or mulched to a fine ground cover.</p>
Treatment Type	
Size of Area/Length of Track	
2.348km	

Treatment ID 17721



Location	Works Required in area Highlighted in red
Mondurup Reserve south	Remove all woody and weedy species from the area.
Treatment Type	Debris should be taken off site for disposal, or mulched
Size of Area/Length of Track	
19.5ha	



Treatment ID 17722



Location

Works Required in area Highlighted in red boundary

Remove all woody and weedy species from the area.

Mondurup Reserve off Mondurup St

Treatment Type
Size of Area/Length of Track
18.5ha

Debris should be taken off site for disposal, or mulched

Treatment ID 17723



Location	Works Required in area Highlighted in yellow
Ingoldby reserve	Remove all woody and weedy species from the area.
Treatment Type	Debris should be taken off site for disposal, or mulched
Size of Area/Length of Track	
4 ha	

Treatment ID 17749



Location	Works Required in area Highlighted in red
Ingoldby reserve	Install an appropriate fire access gate at each end of the fire access track, with Shire approved lock.
Treatment Type	Gates already fabricated and ready to go
Size of Area/Length of Track	
0.2ha	

Treatment ID 17750



Location	Works Required in area Highlighted in red boundary
Cnr St Weburghs Rd and Mitchell st	Remove all woody and weedy species from the area. Weed debris should be taken off site for disposal, or mulched Slash any open areas and track boundaries to 50mm
Treatment Type	
Size of Area/Length of Track	
2.57 ha	

Treatment ID 17782



Location	Works Required in area Highlighted in red
Allenby rd, Kendenup	Ensure Road reserve is cleared of minor vegetation to 6m wide where possible, and 5m high.
Treatment Type	Remove fallen or previously slashed limbs along road boundary, and mulch to a fine ground cover.
	Slash any open areas along road reserve to 50mm.
Size of Area/Length of Track	
0.83km	

Treatment ID 18145



Location	Works Required in area Highlighted in purple
Pile rd reserve north, Denbarker	Install water erosion treatments (minimum 2) Gravel and fill potholes Maintain existing fire access tracks to a minimum of 4m wide where possible, slash/mulch a 1m low fuel boundary on either side, and remove over-hanging vegetation to 5m high. Create a low fuel boundary on either side of the trail by mulching or removal of previously fallen limbs as well as lopped. All loppings and materials to be removed from site or mulched to a fine ground cover.
Treatment Type	
Size of Area/Length of Track	
2.95km	

Treatment ID 19235



Location	Works Required in area Highlighted in purple
Mondurup reserve	Install water erosion treatments on the track. (min 3) Widen/maintain existing fire access tracks to a minimum of 4m wide where possible, and with 1m low fuel either side, plus remove over-hanging vegetation to 5m high. Upgrade fire access track to trafficable surface by grading with existing scree. All debris that is contributing to fuel load within 1m of track, including fallen branches, to be mulched or removed from site.
Treatment Type	
Size of Area/Length of Track	
0.8km	

Treatment ID 19236



Location	Works Required in area Highlighted in purple
Mondurup reserve	Widen/maintain existing fire access tracks to a minimum of 4m wide where possible, and with 1m low fuel either side, plus remove over-hanging vegetation to 5m high. Upgrade fire access track to trafficable surface by grading with existing scree. All debris that is contributing to fuel load within 1m of track, including fallen branches, to be mulched or removed from site.
Treatment Type	
Size of Area/Length of Track	

2.58



Treatment ID 19237



Location

Works Required in area Highlighted in purple

Mondurup reserve

Widen/maintain existing fire access tracks to a minimum of 4m wide where possible, and with 1m low fuel either side, plus remove overhanging vegetation to 5m high. Upgrade fire access track to trafficable surface by grading with existing scree. All debris that is contributing to fuel load within 1m of track, including fallen branches, to be mulched or removed from site.

Treatment Type

Size of Area/Length of Track

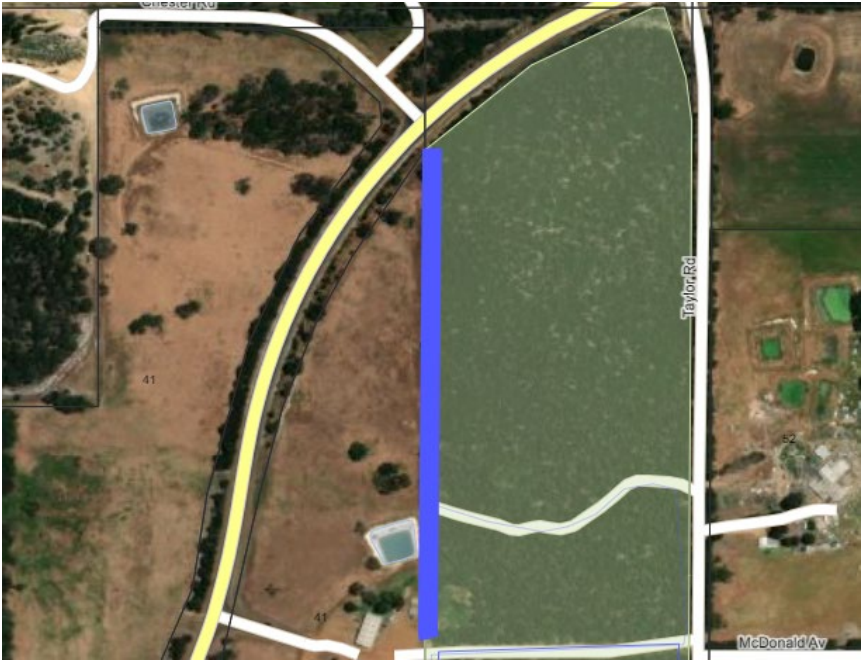
2.48km

Treatment ID 19238



Location	Works Required in area Highlighted in purple
Taylor rd/ Langton rd	Widen/maintain existing fire access tracks to a minimum of 4m wide where possible, and with 1m low fuel either side, plus remove over-hanging vegetation to 5m high. Upgrade fire access track to trafficable surface by grading with existing scree. All debris that is contributing to fuel load within 1m of track, including fallen branches, to be mulched or removed from site.
Treatment Type	
Size of Area/Length of Track	
1.16km	

Treatment ID 19239



Location

Works Required in area Highlighted in purple

Taylor rd reseerve western fire access

Widen/maintain existing fire access tracks to a minimum of 4m wide where possible, and with 1m low fuel either side, plus remove over-hanging vegetation to 5m high. Upgrade fire access track to trafficable surface by grading with existing scree. All debris that is contributing to fuel load within 1m of track, including fallen branches, to be mulched or removed from site.

Treatment Type

Size of Area/Length of Track

0.5km

Treatment ID 19240



Location

Works Required in area Highlighted in red boundary

Souness St/ Oatlands rd/ Speedway lane

Slashing all open areas to 50mm. Widen/maintain existing fire break or access tracks to a minimum of 4m wide where possible, and with 1m low fuel either side, plus remove over-hanging vegetation to 5m high. All debris that is contributing to fuel load within 1m of track, including fallen branches, to be mulched or removed from site.

Treatment Type

Size of Area/Length of Track

11ha

Treatment ID 19241



Location

Works Required in area Highlighted in purple

Williams st/Narrakup rd, Narrakup

Widen/maintain existing fire access tracks to a minimum of 4m wide where possible, and with 1m low fuel either side, plus remove over-hanging vegetation to 5m high. Upgrade fire access track to trafficable surface by grading with existing scree. All debris that is contributing to fuel load within 1m of track, including fallen branches, to be mulched or removed from site.

Treatment Type

Size of Area/Length of Track

2.31km

Treatment ID 19242



Location	Works Required in area Highlighted in purple
Narrikup rd, Narrikup	Widen/maintain existing fire access tracks to a minimum of 4m wide where possible, and with 1m low fuel either side, plus remove over-hanging vegetation to 5m high. Upgrade fire access track to trafficable surface by grading with existing scree. All debris that is contributing to fuel load within 1m of track, including fallen branches, to be mulched or removed from site.
Treatment Type	
Size of Area/Length of Track	
2.17km	

Treatment ID



Location

Works Required in area Highlighted in yellow

Williams st/Hannan Way, Narrikup

Widen/maintain existing fire access tracks to a minimum of 4m wide where possible, and with 1m low fuel either side, plus remove over-hanging vegetation to 5m high. Upgrade fire access track to trafficable surface by grading with existing scree. All debris that is contributing to fuel load within 1m of track, including fallen branches, to be mulched or removed from site.

Treatment Type

Size of Area/Length of Track

0.85km

Treatment ID 19249



Location

Works Required in area Highlighted in red

Porongurup rd, firebreak near hall

Widen/maintain existing fire access tracks to a minimum of 4m wide where possible, and with 1m low fuel either side, plus remove over-hanging vegetation to 5m high.

Treatment Type

Size of Area/Length of Track

0.69km



Treatment ID 19250



Location

Works Required in area Highlighted in purple

Fire break near Porongurup Hall

Widen/maintain existing fire access tracks to a minimum of 4m wide where possible, and with 1m low fuel either side, plus remove over-hanging vegetation to 5m high. Upgrade fire access track to trafficable surface by grading with existing scree. All debris that is contributing to fuel load within 1m of track, including fallen branches, to be mulched or removed from site.

Treatment Type

Size of Area/Length of Track

0.5km

Treatment ID 19251



Location	Works Required in area Highlighted in red boundary
Porongurup Hall	Slashing all open areas around hall to 50mm to form an APZ. Remove over-hanging vegetation to 5m high. All debris that is contributing to fuel load within APZ and 1m of APZ including fallen branches, to be mulched or removed from site.
Treatment Type	
Size of Area/Length of Track	
0.8ha	

Treatment ID 19252



Location	Works Required in area Highlighted in red boundary
Porongurup Fire shed	Parkland clear around big trees. Slashing all open areas to 50mm. Widen/maintain existing fire break or access tracks to a minimum of 4m wide where possible, and with 1m low fuel either side, plus remove overhanging vegetation to 5m high. All debris that is contributing to fuel load within 1m of track, including fallen branches, to be mulched or removed from site
Treatment Type	
Size of Area/Length of Track	
0.12ha	

Treatment ID 19253



Location	Works Required in area Highlighted in yellow
Chester Pass Rd/ Spring Rd	<p>Widen/maintain existing fire access tracks to a minimum of 4m wide where possible, and with 1m low fuel either side, plus remove over-hanging vegetation to 5m high. Upgrade fire access track to trafficable surface by grading with existing scree.</p> <p>All debris that is contributing to fuel load within 1m of track, including fallen branches, to be mulched or removed from site.</p>
Treatment Type	
Size of Area/Length of Track	
2.1km	

Treatment ID 19254



Location

Knights rd east

Treatment Type

Size of Area/Length of Track

0.75km

Works Required in area Highlighted in purple

Widen/maintain existing fire access tracks to a minimum of 4m wide where possible, and with 1m low fuel either side, plus remove over-hanging vegetation to 5m high. Upgrade fire access track to trafficable surface by grading with existing scree.  
 All debris that is contributing to fuel load within 1m of track, including fallen branches, to be mulched or removed from site.

Treatment ID 19255



Location

Works Required in area Highlighted in purple

Knights rd West

Widen/maintain existing fire access tracks to a minimum of 4m wide where possible, and with 1m low fuel either side, plus remove overhanging vegetation to 5m high. Upgrade fire access track to trafficable surface by grading with existing scree.  
 All debris that is contributing to fuel load within 1m of track, including fallen branches, to be mulched or removed from site.  
 Create fire truck turn around area on each side of the boggy section.  
 \*track must be approached at either end, it is not complete due to boggy section in western area.

Treatment Type

Size of Area/Length of Track

0.752

Treatment ID 19256



Location

Works Required in area Highlighted in purple

Surrey Downs Rd

Follow existing tracks. Widen/maintain existing fire access tracks to a minimum of 4m wide where possible, and with 1m low fuel either side, plus remove over-hanging vegetation to 5m high. Upgrade fire access track to trafficable surface by grading with existing scree.

Treatment Type

All debris that is contributing to fuel load within 1m of track, including fallen branches, to be mulched or removed from site.

Size of Area/Length of Track

0.7km

Treatment ID 19257



Location	Works Required in area Highlighted in red boundary
Albany Hwy/ McDonald Av	Slashing all open areas to 50mm.
Treatment Type	Widen/maintain existing fire break or access tracks to a minimum of 4m wide where possible, and with 1m low fuel either side, plus remove over-hanging vegetation to 5m high.
	All debris that is contributing to fuel load within 1m of track, including fallen branches, to be mulched or removed from site.
Size of Area/Length of Track	
3ha	



Treatment ID



Location	Works Required in area Highlighted in red boundary
Albany Hwy/ McDonald Av	Remove woody and weedy species from reserve.
Treatment Type	
Size of Area/Length of Track	
2.8ha	

Treatment ID



Location

Works Required in area Highlighted in purple

McDonald av/ Bourke St

Widen/maintain existing fire access tracks to a minimum of 4m wide where possible, and with 1m low fuel either side, plus remove over-hanging vegetation to 5m high. Upgrade fire access track to trafficable surface by grading with existing scree.

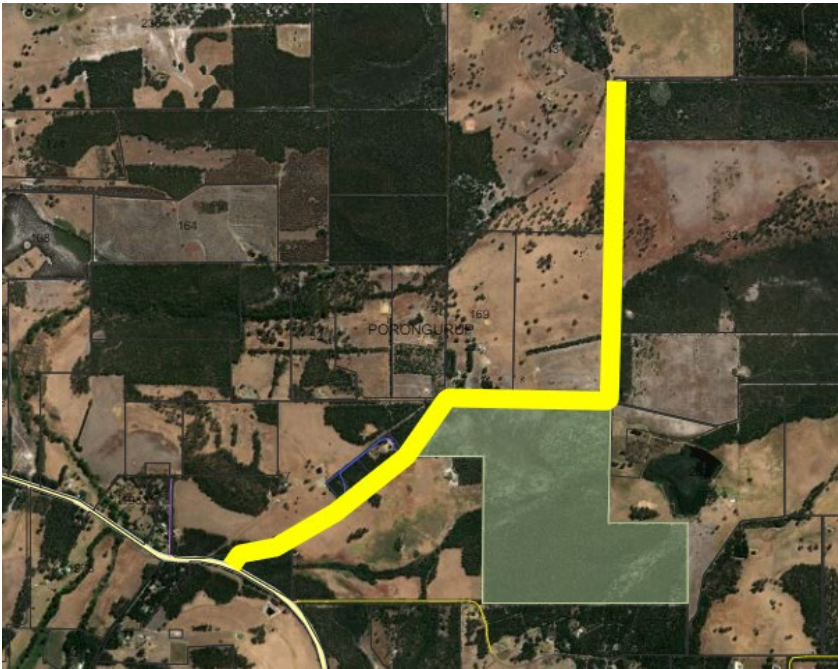
Treatment Type

All debris that is contributing to fuel load within 1m of track, including fallen branches, to be mulched or removed from site.

Size of Area/Length of Track

0.9km

Treatment ID 19267



Location

Works Required in area Highlighted in yellow

Surrey Downs Rd

Slash open areas on road reserve to 50mm. Remove overhanging branches to 5m.

Treatment Type

All debris that is contributing to fuel load within 2m of road verge including fallen branches, to be mulched or removed from site.

Size of Area/Length of Track

2.6km

Treatment ID 19268



Location

Works Required in area Highlighted in yellow

Morande Rd: Yellanup rd to Settlement rd

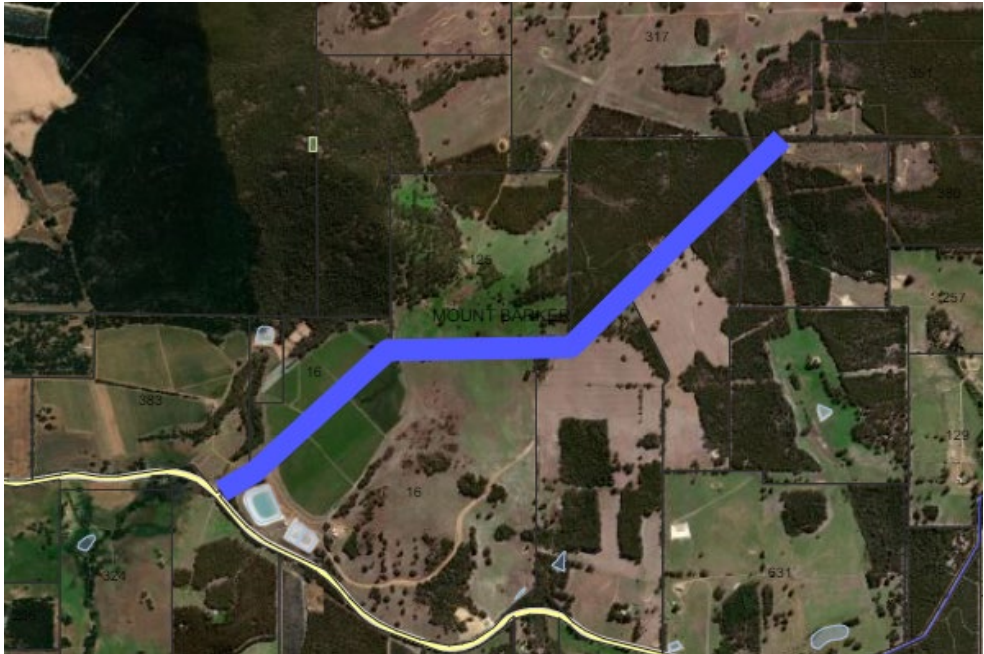
Slash all open areas on road reserve to 50mm  
 Remove overhanging branches to 5m.  
 All debris that is contributing to fuel load within 1m of road or is open areas, including fallen branches, to be mulched or removed from site.

Treatment Type

Size of Area/Length of Track

7.1km

Treatment ID 20017



Location	Works Required in area Highlighted in purple
Bevan rd	<p>Widen/maintain existing fire access tracks to a minimum of 4m wide where possible, and with 1m low fuel either side, plus remove over-hanging vegetation to 5m high. Upgrade fire access track to trafficable surface by grading with existing scree.</p>
Treatment Type	<p>All debris that is contributing to fuel load within 1m of track, including fallen branches, to be mulched or removed from site.</p>
Size of Area/Length of Track	
2.86km	

Treatment ID 20018



Location

Works Required in area Highlighted in purple

Boyup rd: Martagallup rd to Eulup- Manurup rd

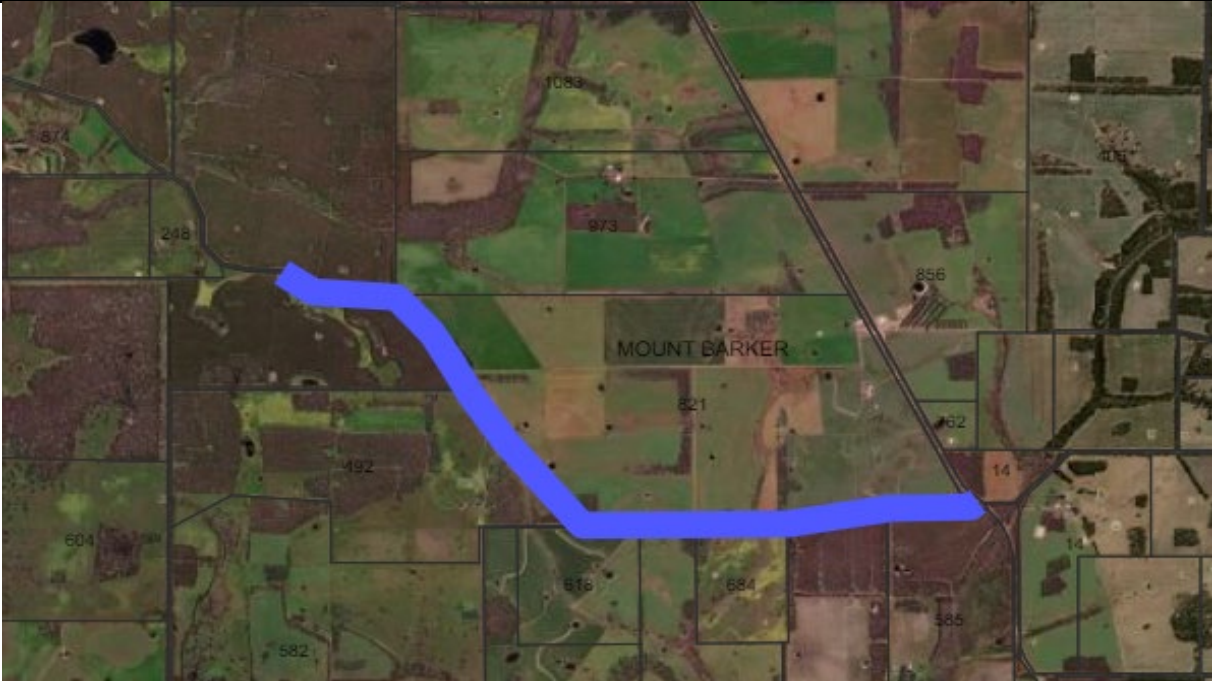
Slash all non-native open areas along road reserve.  
 Widen/maintain existing fire access tracks to a minimum of 4m wide where possible, and with 1m low fuel either side, plus remove over-hanging vegetation to 5m high. Upgrade fire access track to trafficable surface by grading with existing scree.  
 All debris that is contributing to fuel load within 1m of track, including fallen branches, to be mulched or removed from site.

Treatment Type

Size of Area/Length of Track

7.1km

Treatment ID 20019



Location

Works Required in area Highlighted in purple

Mitchell Rd

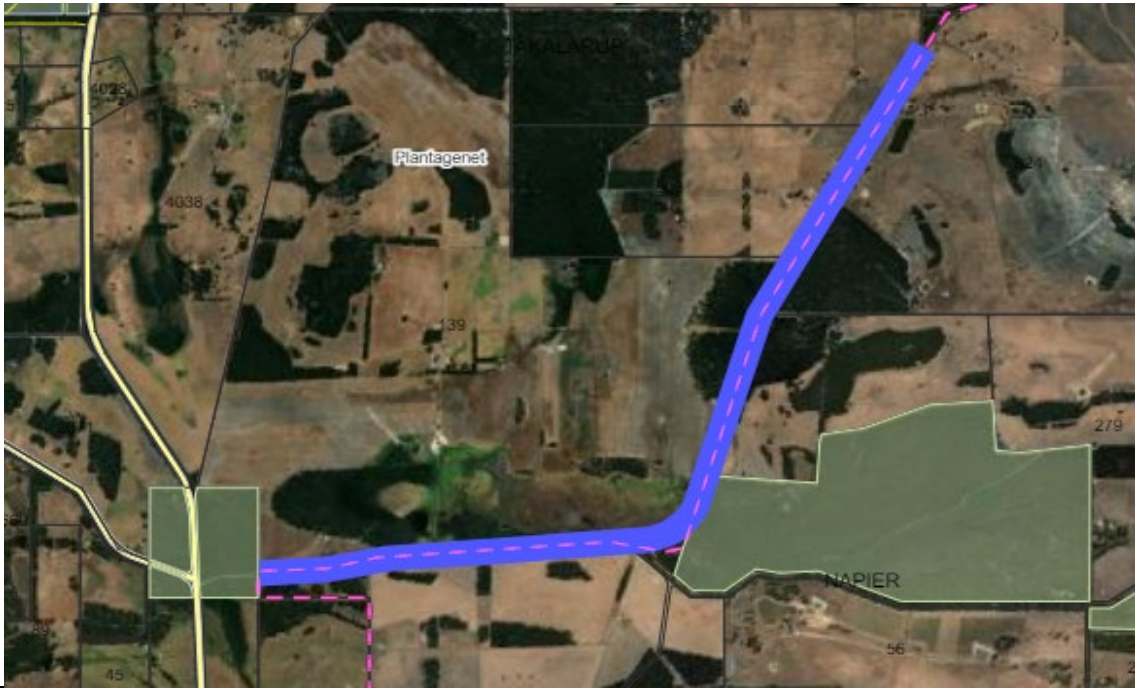
Widen/maintain existing fire access tracks to a minimum of 4m wide where possible, and with 1m low fuel either side, plus remove overhanging vegetation to 5m high. Upgrade fire access track to trafficable surface by grading with existing scree.  
 All debris that is contributing to fuel load within 1m of track, including fallen branches, to be mulched or removed from site.

Treatment Type

Size of Area/Length of Track

3.8km

Treatment ID 20020



Location

Works Required in area Highlighted in purple

Takalanup Rd

Widen/maintain existing fire access tracks to a minimum of 4m wide where possible, and with 1m low fuel either side, plus remove over-hanging vegetation to 5m high.  
All debris that is contributing to fuel load within 1m of track, including fallen branches, to be mulched or removed from site.

Treatment Type

Size of Area/Length of Track

6.3km



Treatment ID 20022



Location

Works Required in area Highlighted in purple

Mills rd,

Slash open areas on road reserve. Widen/maintain existing fire access tracks to a minimum of 4m wide where possible, and with 1m low fuel either side, plus remove over-hanging vegetation to 5m high. All debris that is contributing to fuel load within 1m of track, including fallen branches, to be mulched or removed from site.

Treatment Type

Size of Area/Length of Track

0.9km

Treatment ID 20049



Location	Works Required in area Highlighted in purple
Mira Flores Av, Porongurups	<p>*Contact property before works commence. Widen/maintain existing fire access tracks to a minimum of 4m wide where possible, slash/mulch a 1m low fuel boundary on either side, and remove over-hanging vegetation to 5m high.</p> <p>Grade track using natural scree,</p> <p>All lopping's and materials to be removed from site or mulched to a fine ground cover.</p> <p>Low fuel boundary includes mulching or removal of previously fallen limbs as well as lopped.</p>
Treatment Type	
Size of Area/Length of Track	
0.2km	

Treatment ID 20050



Location

Works Required in area Highlighted in purple

Mira Flores Av, Porongurups

Widen/maintain existing fire access tracks to a minimum of 4m wide where possible, slash/mulch a 1m low fuel boundary on either side, and remove over-hanging vegetation to 5m high. Grade track using natural scree,

Treatment Type

All lopping's and materials to be removed from site or mulched to a fine ground cover.

Size of Area/Length of Track

Low fuel boundary includes mulching or removal of previously fallen limbs as well as lopped.

1.5km

Treatment ID



Location

Works Required in area Highlighted in yellow

Wansbough Walk: from Millinup rd

Widen/maintain existing fire access tracks to a minimum of 4m wide where possible, slash/mulch a 1m low fuel boundary on either side, and remove over-hanging vegetation to 5m high.

Treatment Type

All lopping's and materials to be removed from site or mulched to a fine ground cover.

Size of Area/Length of Track

1.6km

Low fuel boundary includes mulching or removal of previously fallen limbs as well as lopped.

Treatment ID 20181



Location	Works Required in area Highlighted in purple
Woodlands rd, Porongurup	<p>Widen/maintain existing fire access tracks to a minimum of 4m wide where possible, and with 1m low fuel either side, plus remove over-hanging vegetation to 5m high. Upgrade fire access track to trafficable surface by grading with existing scree.</p> <p>All debris that is contributing to fuel load within 1m of track, including fallen branches, to be mulched or removed from site.</p>
Treatment Type	
Size of Area/Length of Track	
1km	



Location

Works Required in area Highlighted in yellow

Stoney Creek Rd

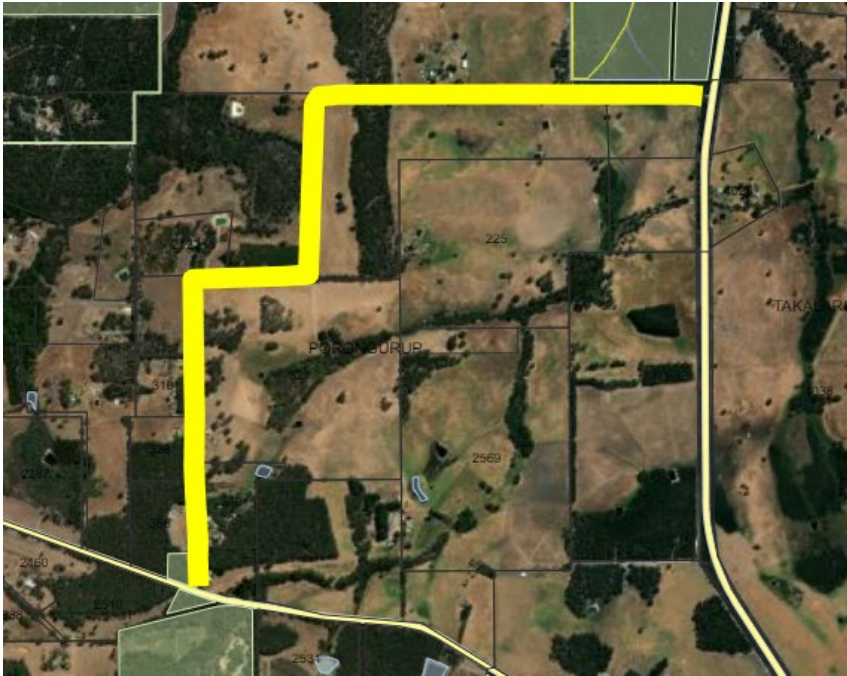
Widen/maintain existing fire access tracks to a minimum of 4m wide where possible, and with 1m low fuel either side, plus remove over-hanging vegetation to 5m high. All debris that is contributing to fuel load within 1m of track, including fallen branches, to be mulched or removed from site.

Treatment Type

Size of Area/Length of Track

1.4km

Treatment ID 20215



Location	Works Required in area Highlighted in yellow
Spring Rd	<p>Widen/maintain existing fire access tracks to a minimum of 4m wide where possible, and with 1m low fuel either side, plus remove over-hanging vegetation to 5m high. Upgrade fire access track to trafficable surface by grading with existing scree.</p> <p>All debris that is contributing to fuel load within 1m of track, including fallen branches, to be mulched or removed from site.</p>
Treatment Type	
Size of Area/Length of Track	
4km	

Treatment ID 20217



Location

Works Required in area Highlighted in yellow

Millinup Rd, Porongurup

Widen/maintain existing fire access tracks to a minimum of 4m wide where possible, and with 1m low fuel either side, plus remove overhanging vegetation to 5m high. Upgrade fire access track to trafficable surface by grading with existing scree.  
All debris that is contributing to fuel load within 1m of track, including fallen branches, to be mulched or removed from site.

Treatment Type

Size of Area/Length of Track

3.2k



Treatment ID 20218



Location

Works Required in area Highlighted in yellow

Costello Rd, Kendenup

Widen/maintain existing fire access tracks to a minimum of 4m wide where possible, and with 1m low fuel either side, plus remove over-hanging vegetation to 5m high. All debris that is contributing to fuel load within 1m of track, including fallen branches, to be mulched or removed from site.

Treatment Type

Size of Area/Length of Track

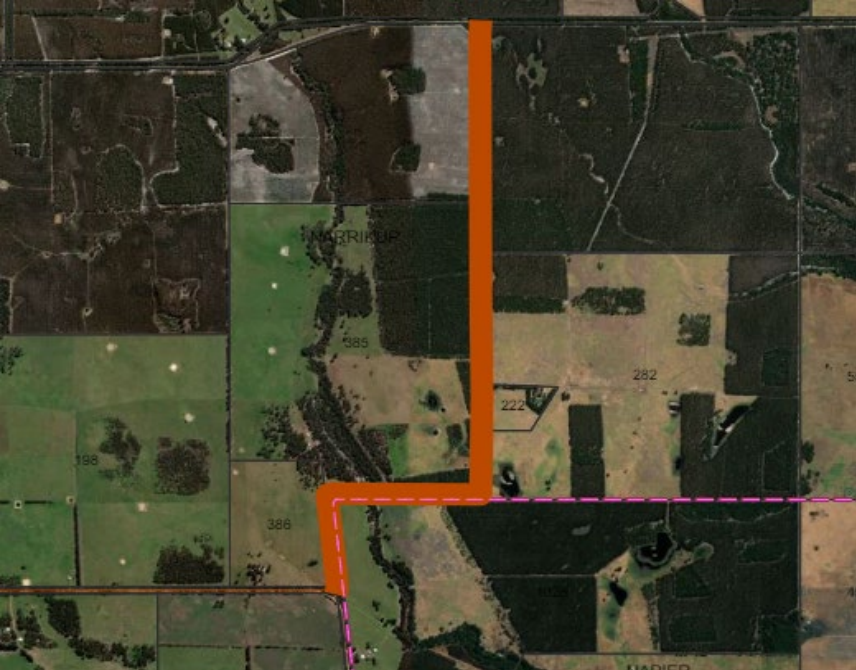
5.2km

Treatment ID 20219



Location	Works Required in area Highlighted in yellow
Settlement Rd East, Narrikup	Widen/maintain existing fire access tracks to a minimum of 4m wide where possible, and with 1m low fuel either side, plus remove over-hanging vegetation to 5m high. All debris that is contributing to fuel load within 1m of track, including fallen branches, to be mulched or removed from site.
Treatment Type	
Size of Area/Length of Track	
6.7km	

Treatment ID 20221



Location	Works Required in area Highlighted in red
Elliot Rd, Narrikup	Widen/maintain existing fire access tracks to a minimum of 4m wide where possible, and with 1m low fuel either side, plus remove over-hanging vegetation to 5m high. All debris that is contributing to fuel load within 1m of track, including fallen branches, to be mulched or removed from site.
Treatment Type	
Size of Area/Length of Track	
4.5km	

Treatment ID 20973



Location	Works Required in area Highlighted in red boundary
Porongurup Fire Shed	Reduce fuel load through planned slow burn with community support
Treatment Type	
Size of Area/Length of Track	
0.2ha	

Treatment ID 8265



Location	Works Required in area Highlighted in red boundary
Behind caravan park: Muir Hwy/Albany Hwy	Slash all open areas on road reserve to 50mm
Treatment Type	Remove overhanging branches to 5m.
	All debris that is contributing to fuel load within 1m of road or is open areas, including fallen branches, to be mulched or removed from site.
Size of Area/Length of Track	
1.1ha	