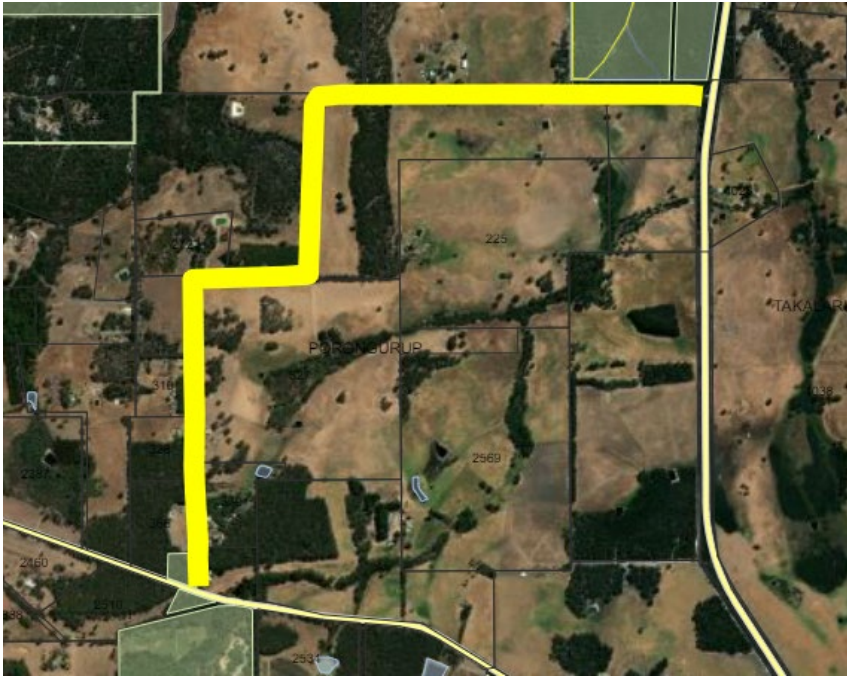


Treatment ID 20215



Location	Works Required in area Highlighted in yellow
Spring Rd	<p>Widen/maintain existing fire access tracks to a minimum of 4m wide where possible, and with 1m low fuel either side, plus remove over-hanging vegetation to 5m high. Upgrade fire access track to trafficable surface by grading with existing scree.</p> <p>All debris that is contributing to fuel load within 1m of track, including fallen branches, to be mulched or removed from site.</p>
Treatment Type	
Size of Area/Length of Track	
4km	