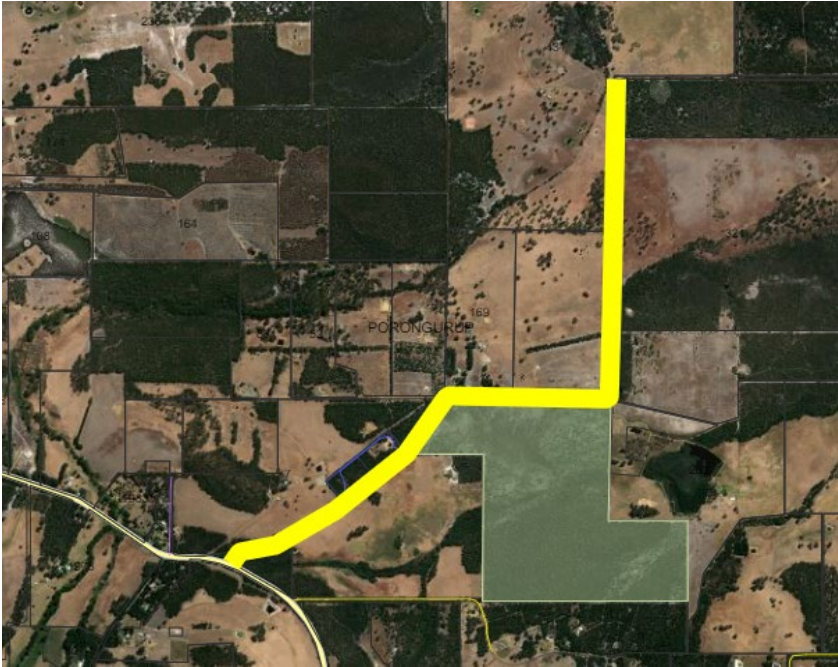


Treatment ID 19267



Location	Works Required in area Highlighted in yellow
Surrey Downs Rd	Slash open areas on road reserve to 50mm. Remove overhanging branches to 5m.
Treatment Type	All debris that is contributing to fuel load within 2m of road verge including fallen branches, to be mulched or removed from site.
Size of Area/Length of Track	
2.6km	