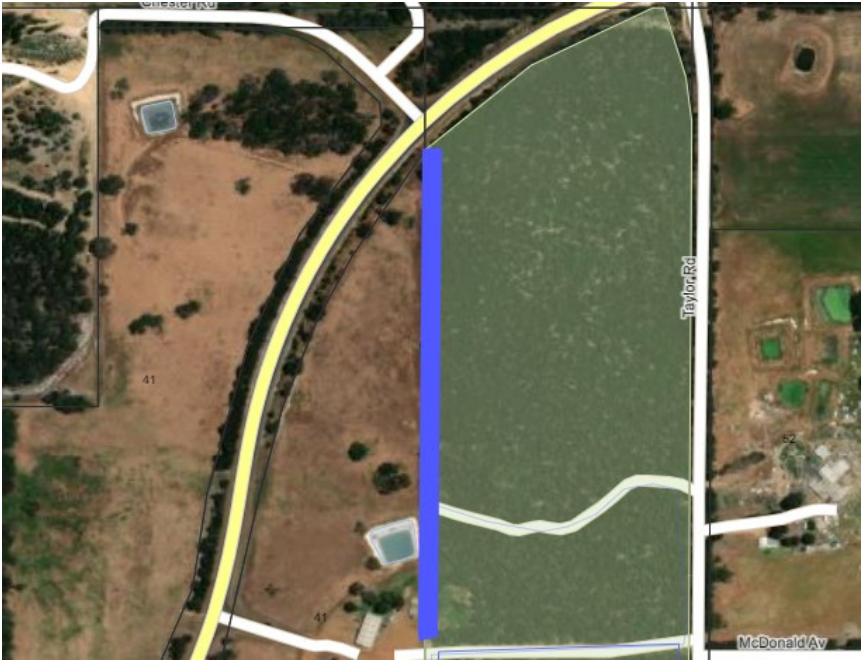


Treatment ID 19239



Location

Works Required in area Highlighted in purple

Taylor rd reseerve western fire access

Widen/maintain existing fire access tracks to a minimum of 4m wide where possible, and with 1m low fuel either side, plus remove over-hanging vegetation to 5m high. Upgrade fire access track to trafficable surface by grading with existing scree. All debris that is contributing to fuel load within 1m of track, including fallen branches, to be mulched or removed from site.

Treatment Type

Size of Area/Length of Track

0.5km