

Council

**ANNUAL BUSH FIRE MITIGATION NOTICE  
2021/2022**

**Bush Fire Mitigation Notice 2021/2022**

**Meeting Date: 22 June 2021**

**Number of Pages : 17**



# **ANNUAL BUSH FIRE MITIGATION NOTICE 2021 / 2022**



**All Shire of Plantagenet landowners and occupiers must prepare their property for the bush fire season.**

**This includes homeowners, tenants, absentee landowners, holiday homeowners and people living on rural properties.**

**PLAY YOUR PART IN KEEPING THE  
COMMUNITY SAFE FROM BUSH FIRES**

Please read this notice carefully and store it for future reference. Do not discard.

**FOR ALL BUSH FIRE  
EMERGENCIES DIAL 000**

For current information relating to harvest and vehicle movement bans or restricted and prohibited burning times, phone 9892 1102.



## DEFINITIONS

**Fire Break** - The fire break must be ploughed, cultivated, scarified, chemically sprayed, slashed or otherwise cleared of inflammable material to a maximum vegetation height of 50mm.

**Total Fire Ban** - The lighting of open-air fires or any other activity in the open air that is likely to cause a fire is banned. For more information go to:  
[www.dfes.wa.gov.au/totalfirebans/Pages/whatisatfb.aspx](http://www.dfes.wa.gov.au/totalfirebans/Pages/whatisatfb.aspx)

## Your Responsibilities

As a measure to assist in the control of a bush fire, or to prevent the spread of a bush fire, all owners and occupiers of land in the Shire of Plantagenet are required to take fire mitigation measures in accordance with this notice.

This includes requirements for vacant land, townsite lots, rural residential lots, broadacre farming and structures and buildings on all categories of land.

**Fire protection measures are essential to help slow the rate of spreading fires and to allow safe access for fire fighters while fighting a fire. If your property is too dangerous to defend, fire fighters may not be able to assist you to save your property in a bush fire emergency.**

**To play your part in keeping the community safe please take care of the work yourself or engage a contractor to do the work on your behalf.**

**REMEMBER - this is YOUR responsibility**

Please read this guide carefully for the correct standards that apply to your property.

**Contact the Shire Ranger or Community Emergency Services Manager during office hours on 9892 1111 if you have any queries in relation to your obligations.**

**Heavy penalties apply to persons who fail to comply with the requirements of this Notice. This could be an infringement or prosecution. The Shire may engage a contractor to carry out the required work at the cost of the owner or occupier.**



## BUSH FIRE MITIGATION NOTICE

***Pursuant to the powers contained in Section 33 of the Bush Fires Act 1954,***

***you are hereby required to undertake the following bush fire mitigation measures by the dates prescribed in the 'Important Information and Dates' section commencing on page 11 of this notice.***

### **Lots with a building, up to and including 1 hectare**

You must create a Building Protection Zone (refer to page 10 for details) and slash or graze the grass over the whole lot to 100mm in height.

If 70% or more of your lot is covered by vegetation other than grass or managed garden beds, a firebreak is required around or within 10 metres of your property boundary. The firebreak must be cleared of inflammable material, be a minimum of 4 metres wide and have a minimum overhead clearance of 4 metres.

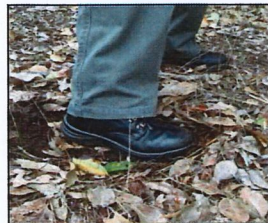
Bush areas are to be kept in a hazard reduced state. This can be achieved by parkland clearing, mulching or removing dead vegetation, bark, leaf litter etc.

### **Lots without a building (vacant land) up to, and including 1 hectare**

You must slash or graze the grass over the whole lot to 100mm in height.

If 70% or more of your lot is covered by vegetation other than grass, a firebreak is required around or within 10 metres of your property boundary. The firebreak must be cleared of inflammable material, be a minimum of 4 metres wide and have a minimum overhead clearance of 4 metres.

Bush areas are to be kept in a hazard reduced state. This can be achieved by parkland clearing, mulching or removing dead vegetation, bark, leaf litter etc.



Bush maintained in a hazard reduced state



Non-compliant fire fuel load



## **BUSH FIRE MITIGATION NOTICE cont.**

***Note: refer to the 'Important Information and Dates' section commencing on page 11 of this notice for the deadlines for your mitigation measures to be installed.***

### **All properties greater than 1 hectare and up to, and including 20 hectares**

You must clear a Building Protection Zone (refer to page 10 for details) and slash or graze the grass to no greater than 100mm high in town sites, and harvest crops over the property to 200mm in height.

Driveways into the property must be cleared of inflammable material, be a minimum of 4 metres wide and have a minimum overhead clearance of 4 metres to allow safe passage for fire trucks.

If 70% or more of your lot is covered by vegetation other than grass, managed garden beds or a seed producing crop, a firebreak is required around or within 10 metres of your property boundary. The firebreak must be cleared of inflammable material, be a minimum of 4 metres wide and have a minimum overhead clearance of 4 metres.

### **Contiguous Leased Blocks**

Where a landowner's primary or adjoining leased property is less than 20ha but the contiguous managed land parcel is greater than 20ha they will be regarded as being one land parcel for the purposes of this Notice. Proof of a formal lease may be required before this clause becomes operable.

If the lease expires or is otherwise cancelled, any affected properties less than 20ha will attract the requirements and restrictions for any block under 20ha stipulated elsewhere in this Notice.



## **BUSH FIRE MITIGATION NOTICE cont.**

### **Sheds, abandoned buildings, haystacks and fuel storage on all properties greater than 1 hectare and up to, and including 20 hectares**

You must clear a firebreak no less than 20 metres and no more than 100 metres from the perimeter of sheds, hay stacks and fuel storage. This firebreak is to be cleared of inflammable material, be a minimum of 4 metres wide and have a minimum overhead clearance of 4 metres.

The area between the firebreak and sheds, hay stacks and fuel storage is to be kept in a hazard reduced state with grass and/or vegetation limited to 100mm in height.

Hay stored beyond 100 metres of buildings does not require a firebreak.

### **Abandoned Buildings**

Abandoned Buildings must be clearly marked by a sign and shall be considered under the same requirements as a shed.

A compliant sign shall have the word '**ABANDONED BUILDING**' in red with lettering 150mm high on a white background placed in a clearly visible location.

### **Livestock on properties up to, and including 20 hectares**

If your land is permanently and sufficiently stocked, there is no need to slash your property. Livestock must graze the grass down to no greater than 100mm high in town sites or 200mm high on properties up to 20 hectares.

### **Fire Management Plans**

In addition to the requirements of this notice, where a Fire Management Plan has been implemented as part of a subdivision, property owners must ensure their property meets the requirements outlined in the Fire Management Plan. Such subdivisions include (but are not limited to) Mira Flores, Stoney Creek and Braidwood Heights.

**You should seek clarification from the Shire of Plantagenet if you are unsure of your responsibilities contained in your Fire Management Plan and this Notice.**



## **BUSH FIRE MITIGATION NOTICE cont**

***Note: refer to the 'Important Information and Dates' section commencing on page 11 of this notice for the deadlines for your mitigation measures to be installed.***

### **All properties greater than 20 hectares**

You must clear a Building Protection Zone (refer to page 10 for details).

Driveways into the property must be cleared of inflammable material, be a minimum of 4 metres wide and have a minimum overhead clearance of 4 metres to allow safe passage for fire trucks.

### **Sheds, haystacks and fuel storage on all properties greater than 20 hectares**

You must clear a firebreak no less than 20 metres and no more than 100 metres from the perimeter of sheds, hay stacks and fuel storage. This firebreak is to be cleared of inflammable material, be a minimum of 4 metres wide and have a minimum overhead clearance of 4 metres.

The area between the firebreak and sheds, hay stacks and fuel storage is to be kept in a hazard reduced state with grass and/or vegetation limited to 100mm in height.

Hay stored beyond 100 metres of buildings does not require a firebreak.

### **Landowners or Managers of properties greater than 10,000 hectares**

A 3.4 Heavy Duty Appliance (4x4 truck carrying 3,000 litres of water) must be located within the property boundary.

**In addition to the requirements for your property there are requirements you must meet for rural operations during the Restricted and Prohibited Burning**



## **BUSH FIRE MITIGATION NOTICE cont**

### **Plantations / Tree Farms**

A plantation / tree farm is defined as an area exceeding 3 hectares within townsites or an area exceeding 10 hectares within rural areas, of trees planted or land under preparation for planting of trees for commercial purposes.

### **Plantation Fire Mitigation Requirements**

***Please refer to the 'Important Information and Dates' section commencing on page 11 of this notice for the deadlines for Plantation fire mitigation requirements to be installed.***

### **Firebreaks**

Plantation boundary firebreaks shall be constructed on the boundaries of all plantations, or such other location as agreed to by the Council.

Boundary firebreaks are to be 15 metres wide and free of inflammable material, with a trafficable surface of at least 6 metres. A vertical clearance is to be established to a height of 4 metres above ground level over the trafficable portion of the firebreak.

Planting compartments are also required, consisting of an area of approximately 30 hectares. These shall be surrounded by 6 metre wide firebreaks cleared of all inflammable material (with a 5 metre trafficable surface). A vertical clearance of all overhanging branches, at least 4 metres above ground level is required to allow unrestricted access for fire fighting equipment. This applies to all established and subsequent rotation (coppice) plantations.

Planting compartments for new or re-established plantations after 1 July 2012 shall consist of an individual area of approximately 30 hectares surrounded by firebreaks with an 8 metre tree to tree separation, a 6 metre horizontal clearance free of all inflammable material (with a 6 metre trafficable surface) and a vertical clearance of all overhanging branches to at least 4 metres above ground level to allow unrestricted access for fire fighting equipment.



## **BUSH FIRE MITIGATION NOTICE cont.**

### **Plantations / Tree Farms**

All landowners or managers of plantation estates greater than 10,000 hectares in total require a 3.4 Heavy Duty Appliance (4x4 truck carrying 3,000 litres of water) located within the Shire.

A firebreak variation may be granted if barriers on the property prevent the installation of firebreaks. Please contact the Shire of Plantagenet for further information.

### **Remainder of the Property**

All areas of the property which are not a plantation / tree farm must comply with the requirements detailed elsewhere in this Notice.

### **Harvesting**

When harvesting is in progress, harvesters must maintain a 400 litre (minimum) mobile fire fighting unit in or adjacent to where harvesting is being carried out.

### **Harvested and Reversion Plantations**

Plantation fire breaks shall remain in place until the removal of all stumps is completed. Boundary Firebreaks are to be 6 metres wide (with a 5 metre trafficable surface) and a vertical clearance of all overhanging branches at least 4 metres above ground level. All compartment firebreaks to be maintained to the same measurements.

### **Abandoned Plantations**

Plantation fire breaks shall remain in place until the removal of all stumps is completed.

### **Fire Protection of Private Plantations**

All plantations must comply with the *Guidelines for Plantation Fire Protection* unless approval to vary those conditions has been granted by the Shire.

A copy of the guidelines may be obtained from the Shire of Plantagenet or from [www.plantagenet.wa.gov.au](http://www.plantagenet.wa.gov.au)

**MINIMUM REQUIREMENTS FOR  
RURAL LAND OPERATIONS DURING  
THE RESTRICTED AND  
PROHIBITED BURNING TIMES**

<b>Type of Operation</b>	<b>Requirements</b>
Harvesting of seed Harvesting of timber Swathing (except canola) Slashing Baling straw / stubble Stone chaining Operation of a portable sawmill	A mobile fire fighting unit with a minimum of 400 litres to be stationed in, or immediately adjacent to, the paddock or area where the operation takes place and within 1 kilometre of the operating machine.
Operation of welding equipment in the open air and power operated abrasive cutting discs	A mobile fire fighting unit with a minimum of 400 litres to be stationed in, or immediately adjacent to, the paddock or area where the operation takes place. A fire extinguisher to be provided at the place where the welding or cutting operation is carried out. Where a welding or cutting operation is carried out, an area around the equipment shall be cleared of all inflammable material to bare earth to a 5 metre radius. In addition, an observer shall be on hand to monitor the site at all times.
Operation of tractors, trucks and self propelled harvesters in standing crop or stubble paddocks	An operational fire extinguisher must be carried on the vehicles.

***If these minimum requirements are not in place and a fire is started by one of these operations, the person responsible for starting the fire may be liable for the cost of fighting the fire.***



## WHAT IS A BUILDING PROTECTION ZONE?

**The aim of a Building Protection Zone is to ensure there is no direct flame contact on a building from a fire and to increase the chance of a building surviving a bush fire. This is done by managing and reducing the amount of fire fuel for a minimum 20 metres around a building.**

A Building Protection Zone is required around all buildings during the restricted and prohibited burning times.

The Building Protection Zone must extend a minimum of 20 metres from any external walls of the building/s (or up to your property boundary if this falls within the 20 metre zone) and must have:

- Only reticulated lawns, gardens and managed vegetation within the zone. Managed vegetation means removing dead plants, fallen branches, bark and deep leaf matter;
- All grass maintained to 50mm or less throughout the 20 metre zone;
- Trees trimmed so there are no branches overhanging the building;
- Lower branches of trees pruned so they are at least 2 metres off the ground;
- Firewood piles kept out of the zone; and
- Gutters kept free of leaves and branches.

To maximise the protection of your building, you may also like to consider:

- Ensuring there are no trees or shrubs more than 2 metres high within 2 metres of a building;
- Installing footpaths, driveways and other non-inflammable features close to the building;
- Increasing the Building Protection Zone on sloping ground. It is recommended that the zone be extended at least 1 metre for every 1 degree in slope;
- Planting / maintaining trees and shrubs to avoid clumping. Tree crowns should be kept a minimum of 10 metres apart;
- Ensuring the pressure relief valve on gas bottles points away from your building; and
- Keeping an operational fire fighting unit.

## IMPORTANT INFORMATION AND DATES

### Zones

The Shire of Plantagenet is separated into Eastern and Western Zones. The boundary between these two bushfire control areas is described as follows;

The boundary line between zones starts at:

- The northern end of Martagallup Road, along Martagallup Road to Boyup Road;
- South on Boyup Road to Sturdee Road;
- East along Sturdee Road to Craddock Road;
- South on Craddock Road to Wilson Road;
- East along Wilson Road to Albany Highway;
- South on Albany Highway to the northern boundary of the gazetted townsite of Mount Barker;
- Follow the gazetted boundary east, then south, then back west to Albany Highway;
- South along Albany highway to O'Neill Road;
- East along O'Neill Road to Woodlands Road;
- North along Woodlands Road to Loc 949;
- East along Loc 949 northern boundary and along the southern boundary of the Porongurup National Park (north of Mira Flores) to Chester Pass Road;
- North on Chester Pass Road to Takalarup Road; and
- East on Takalarup Road to the south east corner of the Shire boundary. (See map on the last page)

### Harvest and Vehicle Movement Bans

Harvest Ban: Any operation of machinery involved in harvesting seed crops / timber and / or any other produce MUST come to a complete stop in paddocks when a ban is in place. A harvest ban applies on Christmas Day.

Vehicle Movement Ban: No vehicles or internal combustion engines are to be driven or operated unless on a constructed road or the driveway into the property residence when a ban is in place. Hot work such as welding or grinding is not to be undertaken in the open air.

### Broadcast of Harvest and Vehicle Movement Bans

Shire of Plantagenet Harvest Ban Hotline - 9892 1102. A recorded message will advise what type of ban is active in the Shire and will also provide details on the Restricted and Burning Time dates.

SMS Messaging of Harvest and Vehicle Movement Bans  
A text message is sent to registered mobile telephones when a ban is set. Contact 9892 1111 if you would like your mobile phone number included on the distribution list.



## **IMPORTANT INFORMATION AND DATES**

### **DATES TO REMEMBER IN THE EASTERN ZONE**

**Camping and Cooking Fires are prohibited  
from 3 October until 30 April**

**Mitigation measures required by this Notice  
must be in place by 15 November and  
remain cleared until 30 April**

**Property Compliance Inspections  
start 15 November and will continue  
through to 30 April**

*(Seasonal conditions may vary the Restricted  
and Prohibited Burning Times.  
Contact 9892 1102 for current information)*

### **DATES TO REMEMBER IN THE WESTERN ZONE**

**Camping and Cooking Fires are prohibited  
from 3 October until 30 April**

**Mitigation measures required by this Notice  
must be in place by 15 December and  
remain cleared until 30 April**

**Property Compliance Inspections  
start 15 December and will continue  
through to 30 April**

*(Seasonal conditions may vary the Restricted  
and Prohibited Burning Times.  
Contact 9892 1102 for current information)*



## RESTRICTIONS ON BURNING

### Restricted and Prohibited Burning Periods

Lighting fires on your property can be extremely dangerous. To help reduce the risk, PROHIBITED and RESTRICTED burning times are set. These dates indicate when you are required to seek a Burning Permit (Restricted Burning Time) and when lighting of fires is prohibited.

#### EASTERN ZONE

**Restricted Burning Time - Permits required**

3 October to 14 November

**Prohibited Burning Time - No burning**

15 November to 28 February and Good Friday

**Restricted Burning Time - Permits required**

1 March to 30 April

#### WESTERN ZONE

**Restricted Burning Time - Permits required**

2 November to 14 December

**Prohibited Burning Time - No burning**

15 December to 28 February and Good Friday

**Restricted Burning Time - Permits required**

1 March to 30 April

***These dates may vary due to  
Seasonal conditions.***

Burning Permits must be obtained from your local Fire Control Officer before burning commences and any special conditions detailed on the permit must be adhered to. Contact details for the Fire Control Officers are available from [www.plantagenet.wa.gov.au](http://www.plantagenet.wa.gov.au) or contact 9892 1111.

Permits will not be issued when the risk of fire escape is considered to be unacceptably high. **Your permit is deemed null and void if a Total Fire Ban is set or a section 46 notice of the Bush Fire Act is imposed by the Shire of Plantagenet.**

It is illegal to approach more than one Fire Control Officer to obtain a Burning Permit.

Burning road verges is encouraged, however a permit must be obtained from the Shire of Plantagenet (year round) Contact 9892 1111 for more details.



## BRIGADE CONTACT DETAILS

### **Denbarker**

#### ***Captain***

Tony Griffiths 0427 715 063

#### ***Secretary***

Jacqui Freeman 0437 345 377

### **Forest Hill**

#### ***Captain***

Craig Moore 0409 424 766

#### ***Secretary***

Kelly Templer 0409 950 644

### **Kendenup *Captain***

Heather Wearmouth 0409 881 865

#### ***Secretary***

Matt Newham 0439 995 465

### **Middle Ward**

#### ***Captain***

Paul Spink 0428 747 746

#### ***Secretary***

Daniel Martin 0409 455 328

### **Narpyn**

#### ***Captain***

*Robert Wright* 0409 611 534

#### ***Secretary***

*Vacant*

### **Narrikup**

#### ***Captain***

Chris Norton 0487 930 351

#### ***Secretary***

Erika Henderson 0429 875 002

### **Perillup**

#### ***Captain***

Dean Trotter 0428 188 862

#### ***Secretary***

Keli Allison 0474 797 395

## BRIGADE CONTACT DETAILS

### **Porongurup**

#### ***Captain***

Gerald Versluis 0408 929 831

#### ***Secretary***

Rodney Scott 0439 844 316

### **Porongurup South**

#### ***Captain***

Wayne Mathews 0497 154 570

#### ***Secretary***

Cass Porter 0419 957 084

### **Rocky Gully**

#### ***Captain***

Ian Higgins 0417 122 017

#### ***Secretary***

Adele Putter 0433 385 798

### **Woogenellup**

#### ***Captain***

Steven Adams 0419 916 110

#### ***Secretary***

Martin Wiehl 0447 197 520

### **South Stirling**

#### ***Captain***

Graeme Pyle 0477 543 069

#### ***Secretary***

Pierre Bailey 0427 543 016

### **Kojaneerup**

#### ***Captain***

Scott Smith 0429 466 037

#### ***Secretary***

Craig Nelson 0428 477 026

### **Town Brigade**

#### ***Captain***

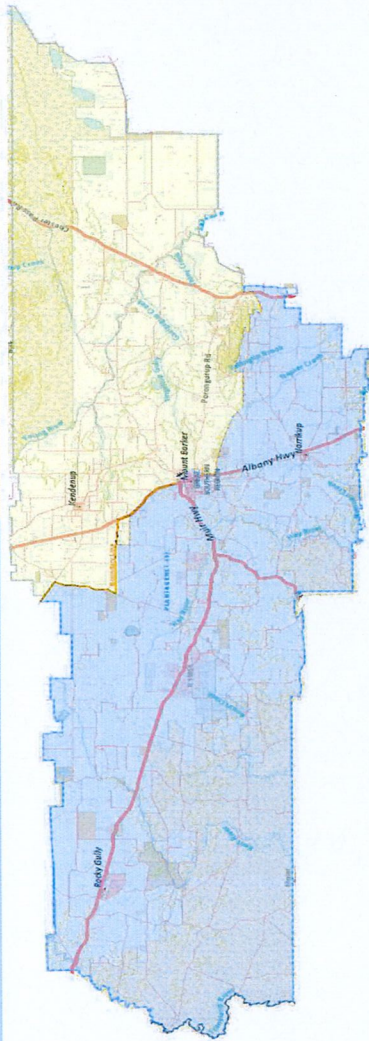
Luis Benavides 0487 506 505

#### ***Secretary***

Rebecca Barnes 0427 123 065



<p><b>Western Zone Restricted Burning Time</b> 2 November to 14 December</p> <p><b>Prohibited Burning Time</b> 15 December to 28 February and Good Friday</p> <p><b>Restricted Burning Time</b> 1 March to 30 April</p>	<p><b>Eastern Zone Restricted Burning Time</b> 3 October to 14 November</p> <p><b>Prohibited Burning Time</b> 15 November to 28 February and Good Friday</p> <p><b>Restricted Burning Time</b> 1 March to 30 April</p>
---	--



**Magnet - top of back page**

**Zone Map**

**Camping and Cooking Fires are prohibited from**  
3 October until 30 April