



NARRIKUP TOWN CENTRE PLACE PLAN 2024-2034

ACKNOWLEDGEMENT OF COUNTRY

We acknowledge the Menang people as traditional custodians of the Narrikup area and recognise any other people or families with connection to the lands of Narrikup and its region.

We acknowledge and respect their continuing culture and the contribution they make to the life of Narrikup and this region.

Narrikup Town Centre Place Plan
is proudly supported by



CONTENTS

Introduction	4
About Narrikup	5
About Place Planning	10
Community Engagement	11
Assets to Retain	12
Narrikup's Character	13
Concept Plan	14
Place Themes	15
Implementation Table	23

Cover image: Roundleaf Honeysuckle photograph by
Tatiana Gerus. Tatters @Flickr. Source:
<https://www.flickr.com/photos/tgerus/6765365869>



INTRODUCTION

The Shire of Plantagenet and the Narrikup Sports & Community Group Inc. (NSCG) have worked with Town Team Movement and Narrikup residents to create a Place Plan for Narrikup Town Centre.

This is a ten year action-focused plan for enhancement of the town centre, as identified by the Narrikup community. It will rely on community efforts, Shire involvement and support, and broader support, funding and collaboration to come to life.

To develop this plan, TTM has engaged with local people to understand priorities, issues and opportunities. Findings from this engagement are discussed in the Listening Report for this project.

The Narrikup Town Centre Place Plan includes a visual Concept Plan to illustrate planned improvements, and an Implementation Table to guide action over the short, medium and longer term.



ABOUT NARRIKUP

Narrikup is a small town between Albany and Mount Barker in the Shire of Plantagenet, which is located within the Great Southern region of Western Australia.

It is 18km south of Mount Barker on Albany Highway and 34km north of Albany, and is shown within the red square on the adjacent map. It is 140m above sea level.

The town is located along the Great Southern Railway Line, completed in this area in 1889, and the siding was previously known as Hay River.

The name Narrikup is believed to be an Aboriginal name for a nearby brook, thought to mean 'place of abundance'.

In terms of its European history, according to the Narrikup District Progress Association's 'A Short History of Narrikup' (2005), Narrikup is known as the 'birthplace of agriculture in the Shire of Plantagenet'. According to this book, in 1829 the area was visited by Thomas Wilson, who travelled from Albany, camping on the banks of the Hay River or one of its tributaries. Sir Richard Spencer then established his Hay River farm here in 1834.

In 1837 a track was built from Albany to Perth, and roads were built by local men employed for this purpose. In 1872, Joseph Nelson built the



Map: By NordNordWest - Own work, using United States National Imagery and Mapping Agency data Australian Government, Department of Infrastructure, Transport, Regional Development and Local Government, CC BY-SA 3.0 de, <https://commons.wikimedia.org/w/index.php?curid=9058250>

ABOUT NARRIKUP

Chorkerup Inne for refreshment of travellers and their horses, and the Old Coach Road from these early days still exists east of town.

The 1883 establishment of the railway was a significant development in the region. People and goods could now be transported far more quickly, and in 1906 the townsite beside the rail line was established and named Narrikup. Around this time, settlers were establishing farms around permanent water holes and streams, and soon the district was supplying large quantities of farm produce - apricots, apples and potatoes - to the region and as far away as Kalgoorlie.

By 1908, Mrs Hannan was running the post office in the railway siding now known as Turner Park, and schooling and community facilities had become a priority. The Narrikup Hall was built in 1914, becoming the venue for dances, social events and meetings, as well as the school premises.

The store first opened in 1919, and in the 1920s moved to the current shop location. There were also timber mill businesses, with one operating until the 1960s near the original post office. Potato growing was also becoming well established, initially on the site of one of the timber mills. By the 1930s there was a strong dairy farming industry, and after the Second World War, butterfat overtook potatoes as the major industry.

During the war, there were many Italian POWs on farms, and later, Italians were the first post-war immigrants to arrive. They were followed by British and Irish immigrants, and those from around the state and country. Some local families have been in the area for four or five generations. These families have seen significant change: a dramatic reduction in dairy farming, replacement of fruit and vegetable growing with vineyards, and an increasing number of olive groves. Newcomers now are often hobby farmers or 'lifestylers' attracted by the climate, landscape and proximity to the coast and regional centres.

ABOUT NARRIKUP

A local view on Narrikup and its unique assets was provided by Narrikup Sports and Community Group Inc. in relation to the story behind their Brandmark identity, as follows:

“In August 2022 it was decided at a management meeting that Narrikup SCG needed an identity – a brand as such. It was then discussed – what is Narrikup? What makes Narrikup ... Narrikup? When you think ‘Narrikup’, what comes to mind?

Initially we agreed – Sport – Cricket – the big bat especially! With the Narrikup Cricket Club establishing in the 1920s, cricket was an easy answer. Next? Surely there’s more to Narrikup than just cricket! Natural beauty, agriculture, community – where do you stop when the name itself means ‘Place of Abundance’?



Image: The Narrikup Cricket Club boasts the biggest cricket bat in the Southern Hemisphere, an eight-metre cricket bat next to the clubhouse. The bat is a tourist drawcard - attracting people from all around Australia.

ABOUT NARRIKUP

After extensive research, digging and asking around, we found some very interesting information that would help us in creating the identity of Narrikup.

Were you aware that Narrikup is home to its very own Critically Endangered plant species (in Western Australia under the Wildlife Conservation Act 1950)? This plant species is protected under the Environment Protection and Biodiversity Conservation Act 1999 Section 269A and has a Recovery Plan in place which came in effect initially during August of 2004 and continues to this day.

The Scientific name of this species is *Lambertia orbifolia* – or more commonly known as “Roundleaf Honeysuckle”. From the Proteaceae family, it is only found in Narrikup. The main factors that are the cause of the species being eligible for listing in the Endangered category are it is known from just five populations and a continuing decline in number of individuals, area, and quality of habitat.



Image: Roundleaf Honeysuckle photograph by Tatiana Gerus. Tatters @Flickr. Source: [xhttps://www.flickr.com/photos/tgerus/6765365869](https://www.flickr.com/photos/tgerus/6765365869)

ABOUT NARRIKUP

So, there was our answer. We had to somehow incorporate the flower from the Roundleaf Honeysuckle plant in our identity, along with a cricket bat!

Next question – how do we do this?

Introducing Adam Demarti – Graphic Designer and Illustrator extraordinaire!!

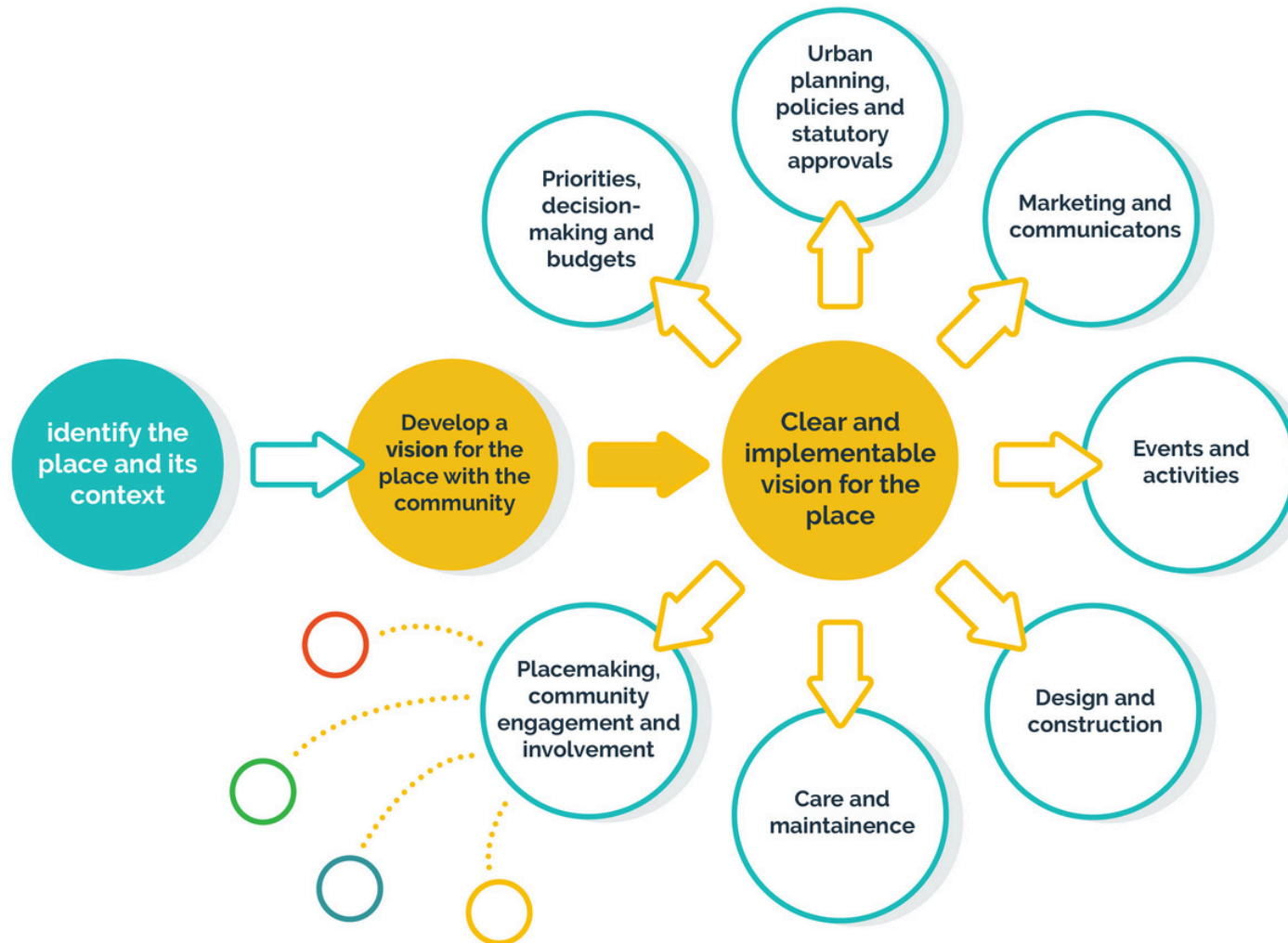
With a garbled brief of what we were envisioning, Adam took it all in his stride and created, what we all agreed on as the most amazing concept which combined two icons of Narrikup into a unique mark.

As you will see from the new logo, the negative space created by the two flowers forms the shape of a cricket bat. We were absolutely blown away with his ingenious design and creativity.”



ABOUT PLACE PLANNING

The Place Vision and Improvement process



COMMUNITY ENGAGEMENT



Community and stakeholder engagement ran from July to September 2024. Engagement findings are detailed in the project's Listening Report, and are the basis of this Place Plan – specifically the Concept Plan and Implementation Table.

Engagement has occurred as follows:

- Survey (online and in-hard copy) open to all
- 'Walkshop' (walking workshop) open to all
- Community conversation (Narrakup Sports & Community Group meeting)
- Place Plan workshop open to all



Engagement findings have been synthesised into seven Place Themes for Narrakup Town Centre, which guide the content of this Place Plan:

1. Narrakup's Natural Environment
2. The 'Heart of Town'
3. Safe and Welcoming Connectivity
4. Tourism and Accommodation
5. Infrastructure Upgrades
6. Turner Park Improvements
7. Sporting Grounds Improvements

ASSETS TO RETAIN

To understand what is most important to local people about Narrikup, and therefore, what to retain and build on, people were asked what they love about their area.

ASSETS TO RETAIN

- Peace, quiet and tranquillity
- The natural bush (protect and maintain it)
- Unique biodiversity
- Nature walks and walking trails
- It's inviting, welcoming and safe
- The small country town atmosphere
- Friendly, passionate, supportive community
- The people, and a real sense of belonging
- Farming community
- Community spirit and volunteers
- Lots of local events & entertainment in community to keep community engaged
- Markets
- Morning Coffee Group
- Narrikup Sports and Community Group
- Sporting club and club house, with the biggest cricket bat in the Southern Hemisphere
- Turner Park, Narrikup Hall, Narrikup playground
- Possibility of a camping ground at the recreational facilities (with a fee)



NARRIKUP'S CHARACTER

To help understand what sort of place people want Narrikup town centre to become, and what elements they would like to lose, workshop participants were asked the following questions, with responses summarised below.

IF NARRIKUP TOWN CENTRE WAS A PERSON, HOW WOULD YOU DESCRIBE THEM RIGHT NOW?

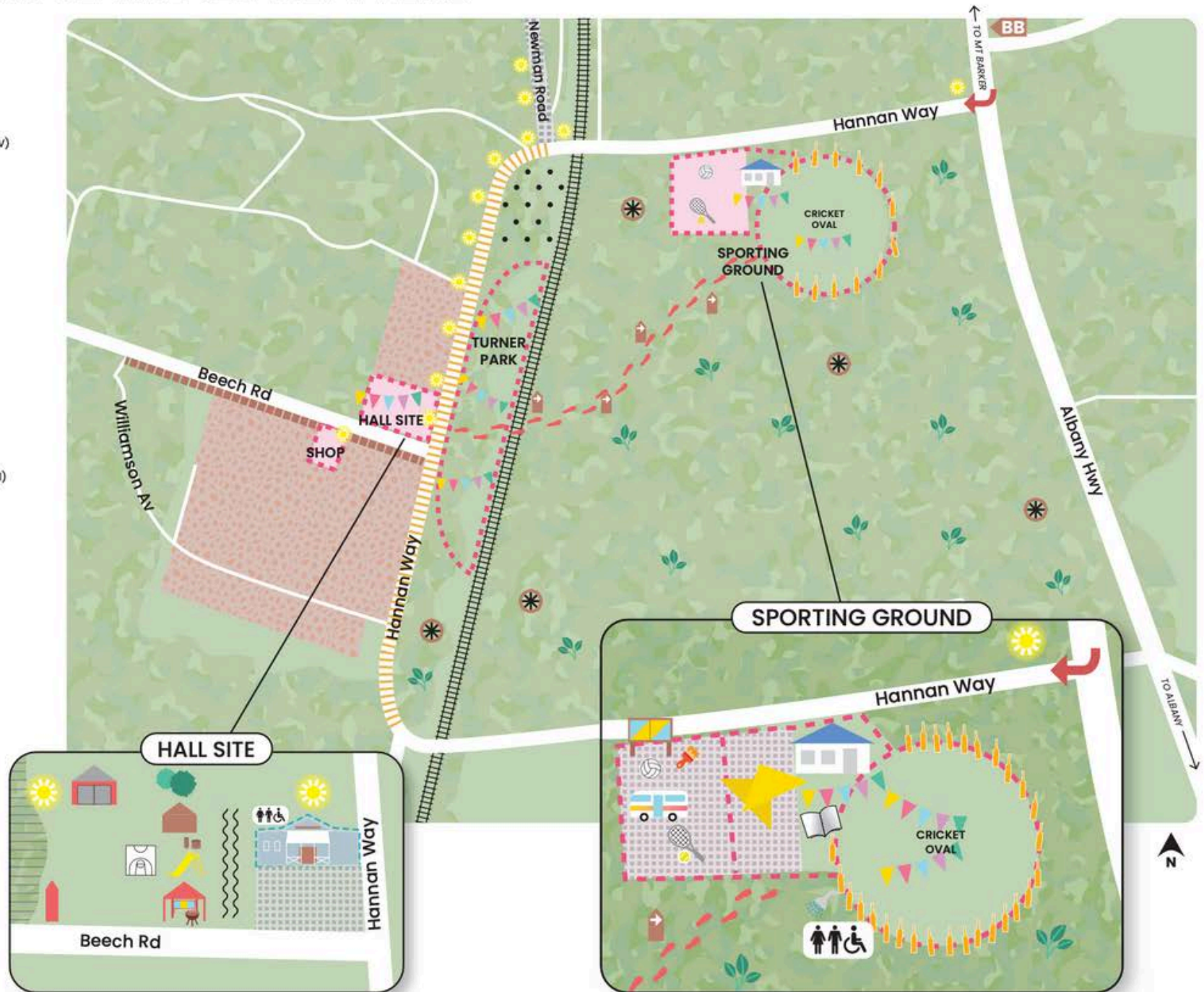
- Pretty
- Quiet
- Old and senile (forgotten what community is)
- Tired
- Scruffy
- Surrounded by bush
- Divided (some get involved, others never get involved)
- Safe
- 3/4 of town keep to themselves - some people buy here and hide in their own little hole
- Nice gardens
- The shop is not open - this is a negative as it used to be the hub

IF NARRIKUP TOWN CENTRE WAS HOW YOU'D LIKE IT TO BE AND WAS A PERSON, HOW WOULD YOU DESCRIBE THEM?

- Vibrant and alive
- A heartbeat - always something open
- Quiet
- Younger
- Utilised (vacant blocks)
- Connected (bus routes)

NARRIKUP TOWN CENTRE CONCEPT PLAN

- Natural Area
- Residential Area
- Main Activity Area
- Event Space
- Rail Line
- Accommodation - Recreational Vehicles (RV)
- Main Visitor Signage
- Secondary Visitor Signage
- Mural
- Information on Walking Trail
- Informational Trail Markers
- Narrikup Hall
- Club Room
- Playground
- Universal Access Toilet
- Resurfacing Area
- Shelter
- Slow Speed Area (eg. Speed bumps)
- Half court
- Hazardous, Non-Native Trees (for removal)
- Tree Stumps (for removal in area)
- Walking Trail
- Cricket Bat Fencing
- Shower
- Footpath
- Lighting Required
- Fire Shed
- Theatre Shed
- Area to be Cleared
- Fire Stand (Relocated)
- Barbeque
- Invasive Weed Management
- Dirt Bike Free Area
- 50km/hr
- Directional Signage to Big Bat
- Dedicated Turning Lane
- Maintenance Area
- Kitchen and Floor Upgrade
- Shade
- Clarify Responsibility
- Netball Court
- Tennis Court



PLACE THEMES

Seven Place Themes have emerged and been tested and refined through engagement. These are explored in the following pages.

The Place Theme pages provide a guide to understanding the Concept Plan in more detail.

Bringing these themes to life is supported by both the visual Concept Plan and the Implementation Table, which details actions, timeframes and responsibilities.

The Place Themes are:

1. Narrikup's Natural Environment
2. The 'Heart of Town'
3. Safe and Welcoming Connectivity
4. Tourism and Accommodation
5. Infrastructure Upgrades
6. Turner Park Improvements
7. Sporting Grounds Improvements



PLACE THEME ONE

Narrikup's Natural Environment

Particularly in terms of what people most love about Narrikup, the natural environment and its protection is extremely important. This relates quality of life and environmental stewardship, but also to tourism and walking trails. Actions for this theme are:




- Develop and implement a coordinated response to invasive weeds (including spraying). Determine if the Shire can coordinate this , or how this would work
- Work together (community and Shire) as this is environmental (there is no funding as these are not agricultural weeds)
- Consider/investigate whether there could be an arrangement with Pardelup Prison to provide a weed management service
- Find out if BirdLife Australia has any registered roosting sites for Narrikup town centre – this will help provide evidence to protect local ecosystems and address common weeds like Sydney wattle, watsonia and arum lilies
- Contact Oyster Harbour Catchment Group in Mt Barker as part of a response
- Provide regular, ongoing education in the community to manage community backlash as people often mistake weeds for native plants – this can be shared through NSCG and Shire communication channels
- Investigate and develop actions for limiting damage by dirt bikes in natural areas, including signage showing protected/endangered species/ ecosystems, blocking access, and providing alternative dirt bike riding locations

PLACE THEME TWO

The 'Heart of Town'

The 'heart' of town includes Narrikup Hall and the shelter, playground, shop and fire shed. Actions for this area are:

- Introduce universal access toilets outside the Hall (one of two top priorities) to modernise, provide for visitors/tourists, and for environmental health
 - Community members can design and develop content for major visitor and historical information on panels attached to the shelter and can seek funding for this
 - Progress replacing the ageing, unsafe playground with one for all abilities (including pram and wheelchair access) - community can investigate grants such as LotteryWest
 - Remove the pine trees in the playground that do not have historical value and have a history of dropping limbs especially on the playground
 - Assess native trees and remove dead limbs/trees as trees are dropping limbs on seating used by children
 - Complete resurfacing of the ground in the shelter to make it safe and accessible
 - Resurface the uneven, flooding Hall site parking area
 - Remove tree stumps in the car park as cars hit these and that space is unusable for any other uses
- 
- A photograph of the Narrikup District Hall, a long, single-story building with light blue horizontal siding and white trim around the windows and doors. A sign above the entrance reads "NARRIKUP DISTRICT HALL". A white pickup truck is parked on the left side of the building. In the foreground, a group of people are standing on a dirt area, looking towards the hall. The sky is overcast with grey clouds, and there are trees in the background.
- Community members continue to get things happening at the Hall, including events, community-run markets and activities
 - Repair unsafe, slippery, absorbent Hall floors
 - Upgrade Hall kitchen to commercial kitchen standard
 - NSCG investigate funding for insurance for markets
 - Introduce a half court for netball / basketball near the playground for older children and young people - clear area beside driveway to Fire Shed to make room for this (and better access for the Fire Truck)

PLACE THEME THREE

Safe and Welcoming Connectivity

This theme includes conditions on Albany Highway, the rail line, roads and signage, paths and walking trails, and speeds. Actions are:

- Main Roads introducing a dedicated turning lane off Albany Highway is a top priority as there have been a number of deaths here. The local road group are progressing this and the Shire is vital in liaising with Main Roads/State Government to keep this progressing
- Introduce a street light at the intersection of Albany Highway and Hannan Way – the turnoff here is dark and dangerous at night
- Introduce a ‘Welcome to Narrikup’ sign on Albany Highway (an entrance sign incorporating Welcome to Narrikup – Place of Abundance + logo flower)
- Introduce signage directing people to the ‘Big Bat’ on Albany Highway
- Seal Newman Road. The school buses and others go down here regularly and it is uneven and muddy – and so they are diverting to Hannan Way to avoid this
- Install a footpath down Beech Road in front of the shop
- Introduce a safety zone (e.g. via speed bumps) to slow vehicles between the Hall and playground where children and others cross
- Establish a walking trail between the ‘heart of town’ and the Sporting Grounds, including an approved crossing over the railway line (wheelchair and pram accessible). Community can lead this with Shire support to liaise with State Government regarding the crossing. Community can identify possible route(s), native plants for informational signage, etc.



PLACE THEME FOUR

Tourism & Accommodation

While many visitors stop to see the ‘biggest cricket bat in the Southern Hemisphere’ they generally don’t explore the rest of the town centre or stay for long. In order to address this lost opportunity, this theme includes signage on Albany Highway, connectivity through town, visitor information, and provision for Recreational Vehicles (RVs).



- Introduce a 'Welcome to Narrikup' sign on Albany Highway (an entrance sign incorporating Welcome to Narrikup - Place of Abundance + logo flower)
- Introduce signage (tourist colouring - brown) on Albany Highway stating something like 'This Way to Big Bat'
- Introduce secondary (and consistent) visitor information on the tennis wall to provide visitors with a guide to town - community members can lead this with Shire support
- Prepare for and then implement RV parking at the Sporting Grounds on the empty netball court area - first introduce universal access toilets and showers (showers may be 'pay for use') and upgrade netball court surface
- Assess playground equipment such as swings when the playground is removed from the Hall site and introduce any suitable items into this RV/accommodation area
- Investigate/progress a mural on the other side of the tennis wall to the visitor signage - community members can lead this

PLACE THEME FIVE

Infrastructure Upgrades

This theme includes footpaths, car parks, drainage, universal access (including universal access toilets), and lighting. Elements of this theme are also included within other themes.



- Install a universal access public toilet at the Hall site (top priority)
- Install a universal access public toilet at the Sporting Grounds (top priority)
- The Shire has proposed to pump out the leach drain to enable the septic system at the Clubhouse to be looked at
- Install lighting at the back of the Hall to make night-time activity safer
- Install lighting for the driveway to the Fire Shed
- Remove tree stumps in the Hall site parking area
- Investigate and, if required by Main Roads as a condition for speed reduction, increase street lighting on Hannan Way/Newman Road on Hannan Way and where it turns into Newman Road and also Williamson Avenue. Community members can liaise with a local Main Roads connection in Narrikup as this speed reduction to 50km/h is a community priority

PLACE THEME SIX

Turner Park Improvements

Turner Park is a beautiful and historically important part of the town centre, right next to (or part of) the 'heart of town'. Actions for this area are:

- Tidy the area nearing Hannan Way and Newman Road, which used to be mowed and is not so well maintained and useable any more. Community members can clear it up so it is easier for the Shire to resume mowing
- Introduce information about the town (perhaps using QR codes,) including the central role of Turner Park historically, as part of a walking trail through the town centre (roughly between the Hall site and the Sporting Grounds). Community members can organise this
- The NSCG intends to continue running annual markets in Turner Park and across Hannan Way at the Hall site (with stalls at Turner Park, and car boot sale in the car park at the Hall site)
- Avoid introducing a permanent fence 20m from the rail line as this is not practical (the required 20m distance from the rail line considerably reduces the space and amenity of the park)



PLACE THEME SEVEN

Sporting Grounds Improvements



The Sporting Grounds is often the first (and only) port of call for visitors to the town centre. The intent is for this to become a major location for tourists and travellers to stay with RVs, and to explore the rest of the town centre from.

Actions for the Sporting Grounds (and NSGC Clubhouse and Cricket Oval) are:

- Introduce universal access public toilets (and showers – possibly ‘pay for use’), male and female as a top priority. This will enable subsequent actions relating to accommodation
- Fix/address leach drains to support the toilets and showers. The Shire needs to address this first
- Commence this work ‘from scratch’ and obtain co-funding. The Shire can apply to DLGSC for a third of the funding, and community members can help with the application/proposal
- Apply to put new toilets on the public toilet register so they can be cleaned by the Shire’s services
- Introduce cricket bat fencing – picket type fencing in a cricket bat shape, made of something weather proof and durable. The NSCG/Cricket Club could apply for funding for this
- Resurface tennis courts to bring them up to decent playing condition
- Clarify roles and responsibilities between the NSCG/Cricket Club and the Shire (e.g. irrigation, top dressing of the cricket ground, upgrades and maintenance)
- Install shade over the outdoor tables. The NSCG has applied for funding for a shade sail

IMPLEMENTATION TABLE

Many potential actions have arisen through engagement, and these are listed under each of the Place Themes.

The Concept Plan shows a wide range of improvements layed out on a map of the town centre, and is supported broadly by the Place Plan (for context) and specifically by this Implementation Table, which guides actions.

Other actions may accompany these or may be added to the Implementation Table over time as community members decide and new opportunities arise.



IMPLEMENTATION TABLE

	ACTION	TIMEFRAME	RESOURCES	RESPONSIBILITY	COMMENTS
1	Commence coordinated response to invasive weeds	Short - Ongoing	Existing educational material BirdLife Australia service Pardelup Community Service (potential) Guidance from Oyster Harbour Catchment Group (potential)	Community Shire Potentially Pardelup Potentially Oyster Harbour Catchment Group	Community can commence by: - sharing educational information (Shire supporting via its channels (ongoing, community coordinates) - contacting BirdLife Australia to identify any recorded local roosting sites Community and Shire liaise to develop coordinated response (may include others.)
2	Activation of Hall through events and activities	Short - Ongoing	Hall Finances for events (e.g. insurance for community-led markets via grants)	Community (lead) Shire (support)	Community to continue activating the Hall, such as with markets and community groups, etc. Upgrades to Hall (short-medium term) will support continued regular use Narrikup Sports and Community Group (NSCG) to seek grant funding for insurance for markets

IMPLEMENTATION TABLE

	ACTION	TIMEFRAME	RESOURCES	RESPONSIBILITY	COMMENTS
3	Removal of unsafe pine trees and assessment of native trees in playground area	Short	Equipment for tree removal Staff/contractors	Shire	Pine trees at the Narrikup Hall do not have historical value and have a history of dropping limbs especially on the playground; also native trees need to be assessed and dead limbs/trees removed as trees are dropping limbs on seating used by children
4	Resurfacing of Hall Site including removal of tree stumps	Short	Funding to pay for works Resurfacing materials Staff/contractors	Shire	This is to address uneven/flooding in the car park and an unfinished ground surface in the Shelter area. These may be completed together or separately The tree stumps in this area are being hit by cars and make the space unusable for other functions
5	Reduce vehicle speeds between the Hall and playground	Short	Funding for works Materials (e.g. for speed bump/s) Staff/contractors	Shire	A safety zone (e.g. via speed bumps) to slow vehicles between the Hall and playground is needed where children and others cross – cars drive through here fast and it is unsafe

IMPLEMENTATION TABLE

	ACTION	TIMEFRAME	RESOURCES	RESPONSIBILITY	COMMENTS
6	Seal Newman Road	Short	Funding for works Materials Staff/contractors	Shire	School buses and others go down Newman Road regularly and it is uneven and muddy - they are often diverting to Hannan Way to avoid this
7	Maintenance of area of Turner Park near Hannan Way and Newman Road	Short - Ongoing	Community labour Shire labour (mowing)	Community Shire	Tidy the area nearing Hannan Way and Newman Road, which used to be mowed and is not so well maintained and usable any more. Community members can clear it up so it is easier for the Shire to resume mowing
8	Clarify Cricket Club & NSCG roles and responsibilities	Short	TBC (see Comments)	Cricket Club/Community Shire	The NSCG, Cricket Club and Shire need to clarify roles and responsibilities relating to irrigation, top dressing of the cricket oval, upgrades and maintenance, etc. in order to manage the Sporting Grounds effectively

IMPLEMENTATION TABLE

	ACTION	TIMEFRAME	RESOURCES	RESPONSIBILITY	COMMENTS
9	Visitor information signage at Shelter (Hall Site) and at Sporting Grounds	Short	Content Design Materials Installation	Community (lead) Shire	<p>Primary informational signage will be at the Shelter, with consistent, secondary signage on the tennis wall at the Sporting Grounds.</p> <p>Community members can design and develop content and seek funding. Major visitor and historical information will be on panels attached to the Shelter, and smaller scale visitor information will be attached to the tennis wall to provide visitors with a guide to town.</p> <p>Community can also investigate/progress a mural on the other side of the tennis wall to enhance this area</p>
10	Installation of lighting on Hall Site	Short-Medium	Lighting infrastructure Installation	Shire (lead) Community (support where applicable)	Lighting is required at the back of the Hall to make night-time activity safer, and for the driveway to the Fire Shed
11	Directional/tourist signage directing	Short - Medium	Approval of signage	Shire	Tourist signage (e.g. brown wayfinding signage) on Albany Highway directing

IMPLEMENTATION TABLE

	ACTION	TIMEFRAME	RESOURCES	RESPONSIBILITY	COMMENTS
	people to the 'Big Bat'		Signage Installation of signage	Community (can support if beneficial)	people to the 'Big Bat' would help with road safety (preparing to turn) and guiding people into the town centre
12	Footpath and light down Beech Road in front of the shop	Short - Medium	Materials Labour	Shire	The footpath currently stops at the intersection of Hannan Way and Beech Road, and there is no path in front of the shop, which is challenging for older people, people with prams etc. A light near the shop is also needed to illuminate the path as it is very dark. Extend the footpath past the 'shop', further down Beech Road to the end of the housing.
13	Dedicated turning lane off Albany Highway into the town centre	Short - Medium	Main Roads approval Materials Labour	Main Roads Local road group Shire	This is a top priority as there have been a number of deaths here. Main Roads has control over the introduction of a dedicated turning lane off Albany Highway. The local road group are progressing this and the Shire is vital in liaising with Main Roads/State Government to keep this progressing

IMPLEMENTATION TABLE

	ACTION	TIMEFRAME	RESOURCES	RESPONSIBILITY	COMMENTS
14	Lighting at Albany Highway/ Hannan Way intersection	Short - Medium	Main Roads approval Lighting infrastructure Labour	Main Roads (lead) Shire (liaise, advocate and support)	A street light at the intersection of Albany Highway and Hannan Way is needed. The turn off here is dark and dangerous at night
15	Remove dirt bikes from natural areas in the town centre	Short-Medium	TBC (see Comments)	Community Shire	Investigate and develop actions for limiting damage by dirt bikes in natural areas, including signage showing protected/endangered species/ ecosystems, blocking access, and providing alternative locations Community can develop proposed strategies/actions and collaborate with Shire on a coordinated approach
16	Shade for the outdoor area at the Clubhouse	Short-Medium	Funding Shade sail components (including for installation) Installation	Community (lead) Shire (support)	Shade is needed over the outdoor tables, and the Cricket Club has applied for funding for a shade sail

IMPLEMENTATION TABLE

	ACTION	TIMEFRAME	RESOURCES	RESPONSIBILITY	COMMENTS
17	Universal access public toilets at Hall Site and Sporting Grounds Clubhouse	Short-Medium	Funding Materials/infrastructure Labour Registration of public toilets	Shire (lead) DLGSC (co-funding) Community (support with applications / proposals)	<p>Universal access male and female public toilets are the top community priority. This includes:</p> <ul style="list-style-type: none"> -universal access public toilet outside the Hall to modernise, provide for visitors/tourists, and for environmental health -universal access public toilet and shower at Sporting Grounds Clubhouse (showers - possibly 'pay for use') to enable actions relating to accommodation/tourism <p>The Shire can apply to DLGSC for a third of the funding, and community members can help with the application/proposal. Applying to put new toilets on the public toilet register will enable them to be cleaned by the Shire's services</p>
18	Replace playground	Medium	Funding (see Comments) Equipment/infrastructure Installation	Community Shire	<p>The ageing, unsafe playground needs to be replaced with one for all abilities (including pram and wheelchair access)</p> <p>Community can investigate grants such as LotteryWest</p>

IMPLEMENTATION TABLE

	ACTION	TIMEFRAME	RESOURCES	RESPONSIBILITY	COMMENTS
					When the existing playground is removed, assess equipment such as swings, and introduce any suitable items into the RV/accommodation area at the Sporting Grounds
19	Introduce a half court beside the playground	Medium	Funding (see Comments) Equipment/infrastructure Installation	Community Shire	A half court for netball / basketball near the playground would be ideal for older children and young people, who have little to do. The area beside the driveway to the Fire Shed would need to be cleared to make room for this and better access for the Fire Truck (see Concept Plan). Standpipe would need to be moved out of the way, and positioned where the 'new' fire station road will be.
20	Walking trail through the town centre with informational trail markers	Medium	Trail route design Rail crossing location approval Trail marker information, design and installation	Community Shire State Government	A walking trail between the 'heart of town' and the Sporting Grounds, including approved crossing over the railway line would enable pedestrian connectivity and access to the natural environment, and would draw visitors from the Big Bat into the rest of town

IMPLEMENTATION TABLE

	ACTION	TIMEFRAME	RESOURCES	RESPONSIBILITY	COMMENTS
					<p>Community can lead with Shire support to liaise with State Government regarding the crossing</p> <p>Community can identify possible route(s), native plants for informational signage, etc. and research/design trail markers (e.g. with QR codes) to provide information on the route</p>
21	Reduce vehicle speeds to 50 kph in the centre of town	Medium	TBC (see Comments)	<p>Main Roads</p> <p>Shire</p> <p>Community</p>	<p>Speed reduction to 50 kph around the centre of town is a top community priority. To facilitate this, investigate if Main Roads require additional lighting as a condition for speed reduction, and if, so, increase street lighting on Hannan Way and where it turns into Newman Road and also Williamson Avenue. Investigate whether a trial speed reduction is possible. Community members can liaise with a local Main Roads connection</p>

IMPLEMENTATION TABLE

	ACTION	TIMEFRAME	RESOURCES	RESPONSIBILITY	COMMENTS
22	Narrikup Hall upgrades to kitchen, floor and windows	Medium	Funding Materials/infrastructure Labour	Shire (lead) Community (support)	<p>A commercial-standard kitchen at the Hall will help manage risk (currently caused by the ageing kitchen) and support ongoing use</p> <p>The floor of the Hall is also unsafe, slippery (there have been a number of accidents), and absorbent. Community can support with labour (e.g painting) where appropriate.</p> <p>Blockout blinds will also prevent lighting disrupting people inside/outside the Hall</p>
23	Establish Sporting Grounds site for Recreational Vehicle(RV) / tourist use through upgrading netball and tennis courts	Medium - Long	Materials/infrastructure Labour	Shire (lead) Community (support)	<p>To facilitate RV use of the Sporting Grounds site, upgrade the netball court surface to enable RV parking there. This will occur after a number of related actions including installation of toilets and shower facilities, shade, visitor information and walking trails.</p> <p>RV Dump Point to be made available</p>

IMPLEMENTATION TABLE

	ACTION	TIMEFRAME	RESOURCES	RESPONSIBILITY	COMMENTS
					<p>Investigate tourist value of Big Bat through traffic survey</p> <p>Also resurfacing the tennis courts to bring them up to decent playing condition will prepare this area for visitors.</p> <p>Community will support through associated actions, painting, etc.</p>
24	Reintroduce cricket bat fencing at the Sporting Grounds	Medium - Long	Materials	Community Shire	<p>Introduce cricket bat fencing - picket type fencing in a cricket bat shape - made of something weather-proof and durable around the cricket oval.</p> <p>NSCG/Cricket Club could apply for funding for this</p>
25	Narrikup Welcome Sign on Albany Highway entrances	Medium - Long	Materials/infrastructure Labour	Community Shire	Entrance sign incorporating Welcome to Narrikup - Place of Abundance + local flora

RESOURCES

Narrikup Sports & Community Group (NSCG) and the Narrikup community will need collaboration, support and resourcing from numerous partners to make the Narrikup Town Centre what it has the potential to be.

There are grants available to assist, and industry partners in the area may provide funding support, whether monetary or via in-kind goods and services.

The Shire of Plantagenet can provide vital assistance, in terms of in-kind support, grants, or budget allocation for projects in this plan.

Town Team Movement will continue to liaise with and support NSCG by connecting the group with relevant networks, grants and resources in the region.

Town Team Movement looks forward to a long and productive relationship with Narrikup.

